
Setting up Eclipse CDT on Windows, Linux/Unix, Mac OS X

Max Berger <max@berger.name>

\$Date: 2010/07/18 12:23:33 \$

Copyright © 2005, 2006, 2007, 2008, 2009, 2010 Max Berger

Permission is granted to copy, distribute and/or modify this document under the terms of the GNU Free Documentation License, Version 1.2 or any later version published by the Free Software Foundation; with no Invariant Sections, no Front-Cover Texts, and no Back-Cover Texts. A copy of the license is included in the section entitled "GNU Free Documentation License".

If you want to use the content provided here in another GDFL document or replicate it at another location you are free to do so under the terms of the GFDL. I would, however, very much like to receive an email about it.

Table of Contents

| | |
|---|----|
| Introduction | 2 |
| Other Resources | 2 |
| Setting up a compiler | 2 |
| Windows compiler | 3 |
| Linux / Unix Compiler | 8 |
| Mac OS X Compiler | 9 |
| Setting up Eclipse | 9 |
| Java | 9 |
| Downloading Eclipse | 9 |
| First Run of Eclipse | 10 |
| Installing the CDT | 11 |
| Configuring the CDT | 13 |
| Hello, World! | 14 |
| Common Problems | 16 |
| How to fix most of the errors on Windows | 16 |
| Build error (Exec error:Launching failed), CreateProcess: make -k all error=2, | 17 |
| /bin/sh: line 1: g++: command not found, Error launching external scanner info generator..... | 17 |
| No output or only sometimes output | 17 |
| Error launching 'cygpath' command | 17 |
| I do not have the option to start a C++ project | 18 |
| Error 1, open output file blabla.exe: Permission denied | 18 |
| The debugger doesn't work (on windows, with MinGW) | 18 |
| Incorrect command line argument: -k' | 18 |
| A Java Runtime Environment (JRE) or Java Development Kit (JDK) must be available..... | 18 |
| I have no binaries | 19 |
| Unable to access jarfile startup.jar | 19 |
| Problems when CYGWIN is installed on Windows | 19 |
| Launch failed Reason: Unable to set working directory | 20 |
| Problems not covered here | 20 |
| Older Instructions | 20 |
| Installing the CDT on Eclipse 3.4 | 20 |

| | |
|--|----|
| Hello, World! in older versions of CDT | 22 |
| Eclipse 3.1 with CDT 3.0 | 26 |
| MinGW 4.x | 30 |
| MinGW 3.1 | 32 |
| Feedback | 32 |
| A. GNU Free Documentation License | 32 |
| PREAMBLE | 32 |
| APPLICABILITY AND DEFINITIONS | 33 |
| VERBATIM COPYING | 34 |
| COPYING IN QUANTITY | 34 |
| MODIFICATIONS | 35 |
| COMBINING DOCUMENTS | 36 |
| COLLECTIONS OF DOCUMENTS | 36 |
| AGGREGATION WITH INDEPENDENT WORKS | 36 |
| TRANSLATION | 37 |
| TERMINATION | 37 |
| FUTURE REVISIONS OF THIS LICENSE | 37 |
| ADDENDUM: How to use this License for your documents | 37 |

Introduction

There are several freely available C and C++ development environments available. Most of them have the disadvantage that they are only available for one operating system. Eclipse, however, was written as a cross-platform development environment. Initially just written for Java, it also has a very good C/C++ development mode.

If you have already tried (and I assume failed, otherwise you wouldn't be reading this document) to install Eclipse CDT, you may want to go directly to the section called “Common Problems”.

This document is frequently updated to reflect the latest information. However, screenshots are only taken if they are significantly different, so they may show older versions. If any information here is not current, please let me know.

Other Resources

When looking for Instructions, I found the following websites:

- <http://wiki.eclipse.org/CDT/User/FAQ>
- <http://yongshin.blogspot.com/2005/11/how-to-use-cdt-and-mingw-for-eclipse.html>
- <http://www.cs.umanitoba.ca/~eclipse/7-EclipseCDT.pdf>

Newer versions of this paper can be found at:

- <http://max.berger.name/howto/cdt/> (HTML) and
- <http://max.berger.name/howto/cdt/cdt.pdf> (PDF)

Setting up a compiler

Unfortunately Eclipse only provides the Integrated Development Environment (IDE) but it is missing the actual compiler. To install a compiler, please follow the instructions for your operating system.

Windows compiler

Windows doesn't come with a build-in compiler. You could try to install Visual Studio, but it is tricky to get that working with Eclipse. Therefore we will install MSYS [<http://www.mingw.org/msys.shtml>]. MSYS is part of the MinGW [<http://www.mingw.org/>] suite, which provides free development tools for Windows.

You will have to follow these 4 steps:

- Download and install MinGW
- Download and install MSYS
- Set your path environment variable
- Restart Eclipse if it was started.

MinGW

First, you need to download MinGW. You can either click through the websites mentioned above or go directly to the MinGW download area [http://sourceforge.net/project/showfiles.php?group_id=2435]. Look for the Package "Automated MinGW Installer". There, download the file ending in .exe. The file name should be something like "MinGW-5.1.4.exe". You can also download MinGW Version 5.1.4 [http://downloads.sourceforge.net/mingw/MinGW-5.1.4.exe?modtime=1209244789&big_mirror=1] from the link given here.

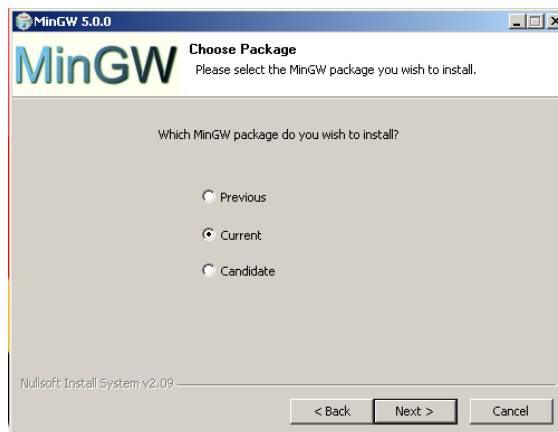
You may also download an older version, and follow the instructions given in the section called "Older Instructions":

- You may download MinGW 4 [<http://prdownloads.sourceforge.net/mingw/MinGW-4.1.0.exe?download>] and follow the instructions in the section called "MinGW 4.x".
- You may download MinGW 3 [<http://prdownloads.sourceforge.net/mingw/MinGW-3.1.0-1.exe?download>] and follow the instructions in the section called "MinGW 3.1".

Most of the options in the MinGW 5 installer are pretty straightforward. I will point out some of the more tricky options.

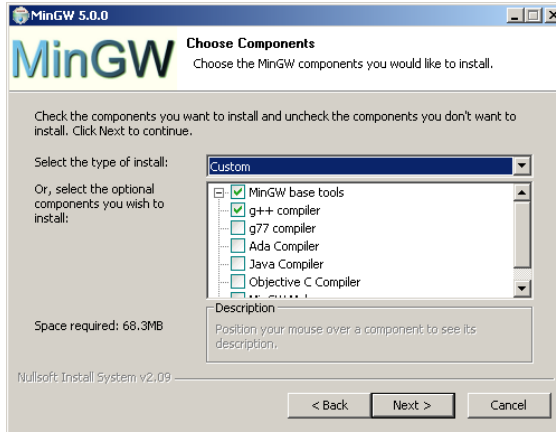
The first one of such options is which "MinGW" package to install. Any of those should work just fine, but I would recommend `Current`.

Figure 1. MinGW 5 install



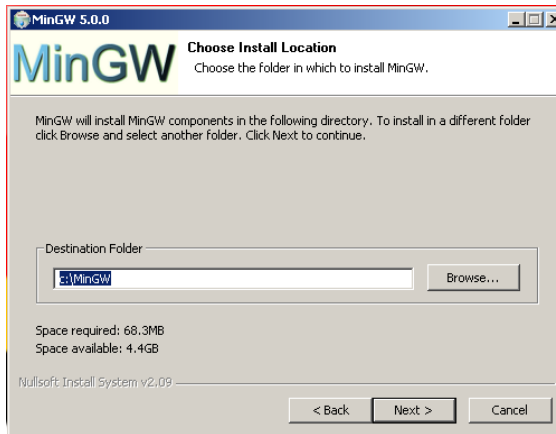
MinGW will ask which components to install. Either select **All** or at least make sure that you have the `g++` compiler checked. This is needed for C++ support.

Figure 2. MinGW 5 install (2)



When asked for the install folder, please do not change it. You will have a lot of trouble later on, especially if you chose a path that contains spaces.

Figure 3. MinGW 5 install (3)



That's already it for MinGW. There are two more steps: **MSYS** and the **Environment Variables**.

Checkpoint: To test if everything worked, please reboot. Then open up a terminal. (Start/Run, type `CMD`). Try these commands:

```
gcc --version
```

should print the version of `gcc`. If you get a "File not found", try logging out and logging back in, or even rebooting your computer. If it still does not work, you have not installed MinGW correctly. You may also need to set your environment variables manually (see below).

```
g++ --version
```

should print the version for `g++`. You did select the "g++ compiler" I hope. If not, install again!

GDB (optional!)

This section is completely optional. You may skip it and go directly to the section called "MSYS".

If you want to use the debugger, you may have to install it separately. This is the case with MinGW 5.0.2, it may be different in other versions. Download it from the same page, look for a package starting with gdb and ending with .exe. At the time of this writing (Apr 29) the current version was "gdb-5.2.1-1.exe". Install (double-click) that .exe, select all the default options (make sure you select the same MinGW directory as you did during the MinGW install).

I have received a report that gdb-6.3-2 does not work. So I would advise using the older version or waiting for a newer one.

Checkpoint:

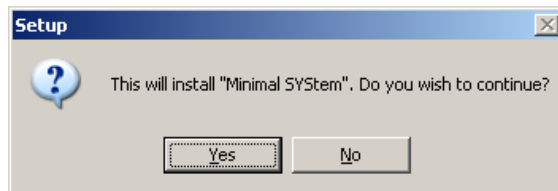
```
gdb --version
```

should print the gdb version. This is optional.

MSYS

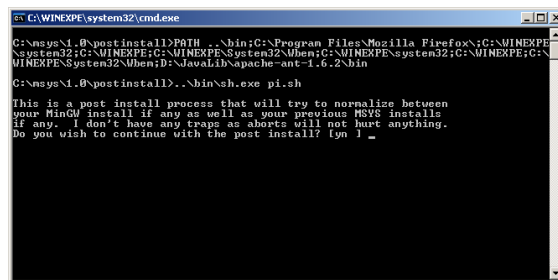
Unfortunately MinGW is not enough. We also need the MSYS tools from the same download page. Go there again, to the "Current" section and look for "MSYS Base System". Again, look for the file ending in .exe, as this time: "MSYS-1.0.11.exe". You may have to expand the "Release Candidate" section. Or you may use the link here to MSYS-1.0.11.exe [<http://downloads.sourceforge.net/mingw/MSYS-1.0.11.exe>]. Download it and start it. You should get a window like this:

Figure 4. MSYS install



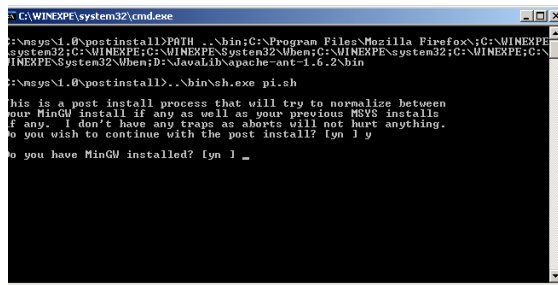
If you accept all the default options, after a while there should be a black and white window, similar to this:

Figure 5. MSYS asking for postinstall



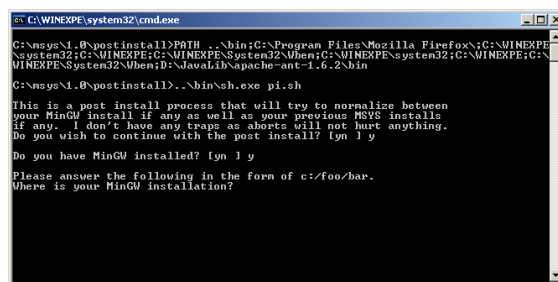
To continue the install type in y and then Enter. The next question reads like this:

Figure 6. MSYS asking for MinGW



Which you can also answer with y Enter. The next question is a little bit more tricky:

Figure 7. MSYS asking for path to MinGW



What they want to know is where you installed MinGW to and that you replace all backward slashes (\) by forward slashes (/). If you followed the instructions, the answer here will be:

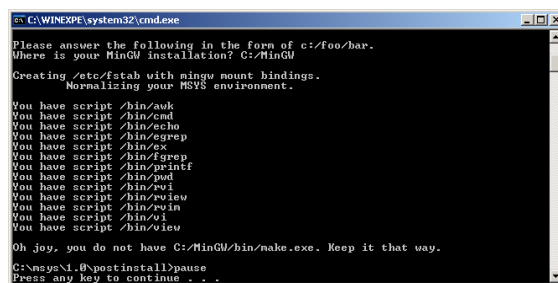
C:/MinGW

Caveat: If you have not used the default paths, but instead have installed MinGW in a different location, such as C:/Program Files/MinGW, where the path contains spaces and / or is longer than 8 characters you may have to replace that particular path component with its DOS short pathname, such as C:/PROGRA~1/mingw.

Caveat2: The installer may be case sensitive. Please make sure you have written MinGW in the same capitalization as during your first install, in some cases you will have to enter c:/mingw (note capitalization!).

The very last question just asks you to press a key:

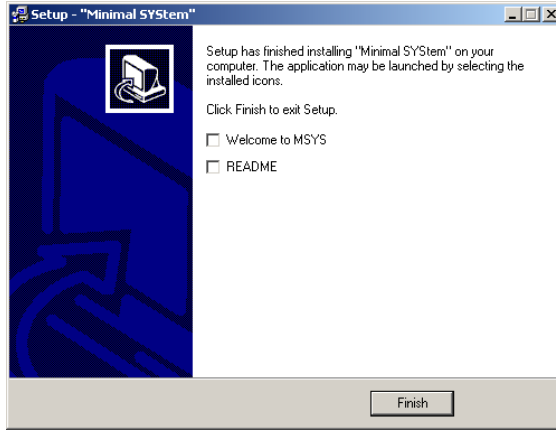
Figure 8. MSYS installing correctly



Where you can press any key you like to continue. Setup will come back and ask you if you want to read a welcome note and the README file. You probably don't want either one, but it does not hurt to

look. Anyways, once you hit "Finish" you are done with the setup. Now you have to set up your Path environment variable.

Figure 9. MSYS is done



Environment Variables

The next thing you need to do is set up your Path environment variable. To do so, right-click on My Computer and select Properties. Then, select the Advanced tab. There should be a button called Environment Variables.

Figure 10. Finding Environment Variables (Windows 2000)

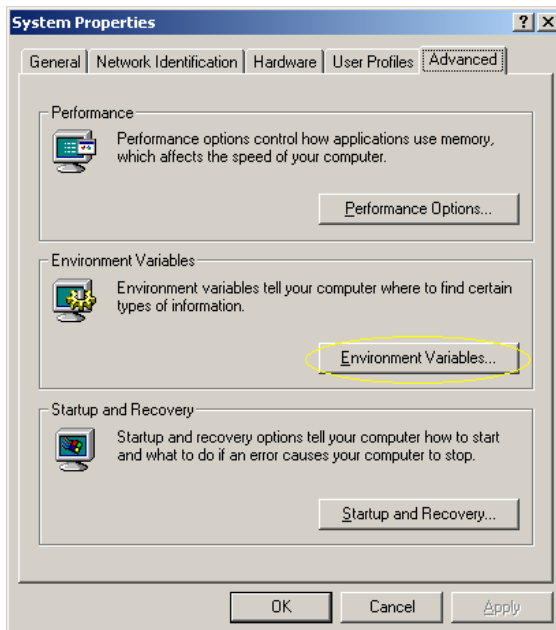
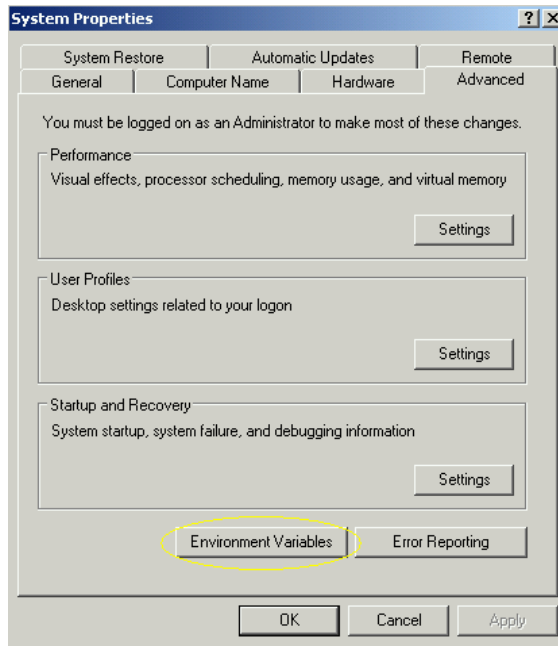


Figure 11. Finding Environment Variables (Windows XP)



In the environment variables, there are two sections, one for the local user (you) and one for the system. Depending on whether you want the paths to be set for everyone, or for you, do one of the following:

Warning: I had reports of people deleting their existing Path environment variable! Please be very careful when editing an existing value! By default, Windows has the whole line selected, resulting in overwriting what was in there!

If you want to set it for everyone, look for the variable `Path` in the section `System variables`. Click `Edit`. There should already be some stuff in there, append `;C:\msys1.0\bin;C:\mingw\bin` (or your appropriate paths) to it, and select `OK` multiple times. Please make sure that you do not overwrite what was in there!

If you just want to set it for you, look for `Path` in the upper section. It is very likely not there yet. So select `New...` and enter `C:\msys1.0\bin;C:\mingw\bin` (or your appropriate paths). Then select `OK` multiple times. Again, if there was a setting before, do not delete it, but rather append your path!

There seems to be a problem with a very long `PATH` environment variable on some systems. According to reports, Eclipse will fail to compile and build, where as compiling and building from a command window may work fine. In this case, try to prepend the path to MinGW and MSYS rather than appending it.

Congratulations. Now you have a compiler and make set up on your computer. Continue with the section called "Setting up Eclipse".

Checkpoint: Open up a command terminal (`cmd`) and type:

```
make --version
```

This should work now. If not, you have either not installed MSYS correctly or not set your path environment variable. Also, try logging out and back in.

Linux / Unix Compiler

In most Linux and Unix distributions the compiler is already installed. Check if you can run


```
g++ --version
```

and either

```
make --version
```

or

```
gmake --version
```

If both of them (`g++` and either `make` or `gmake`) work then you are already done. If not, please install those. This may be very different depending on which Linux or Unix distribution you have. Install the tools and continue with the section called “Setting up Eclipse”.

Mac OS X Compiler

On Mac OS X you can also try the commands explained in the section called “Linux / Unix Compiler” to check if you have the necessary tools installed. If not, you will need to install the developer tools. They are either on one of your Mac OS X CDs that came with your computer, or you can download them at: Apple's developer connection [<http://connect.apple.com>].

Setting up Eclipse

On Windows XP and later, this may be a good point in time to create a system restore point. This may save you trouble in the long run if the installation fails.

Java

Eclipse was originally written for the Java platform. It still requires a Java Runtime Environment (JRE) or a Java Development Kit (JDK), version 1.5 or greater. You will most probably already have Java installed (it comes included in Mac OS X). However, if you don't have Java installed, and you are on Windows or Linux, you can download a JRE from Sun's Java website [<http://java.sun.com/javase/>] or from java.com [<http://www.java.com>]. At the time of this writing the latest version was Java Runtime Environment (JRE) 6 update 21 [<http://java.sun.com/javase/downloads/index.jsp>]. Look for the section called "Java SE Runtime Environment (JRE)" and select "JRE 6 Update 21" (or similar). You will not need NetBeans, JDK, or EE, they are just larger downloads with more programs. You may need the JDK if you want to do Java development.

Note: There may be an incompatibility between Eclipse Helios and Java 1.6 update 21 [<http://blog.max.berger.name/2010/07/eclipse-helios-and-java-16u21-deadlocks.html>].

To find out if you have Java installed, and which version it is, you can open a command prompt / shell and type in:

```
java -version
```

Downloading Eclipse

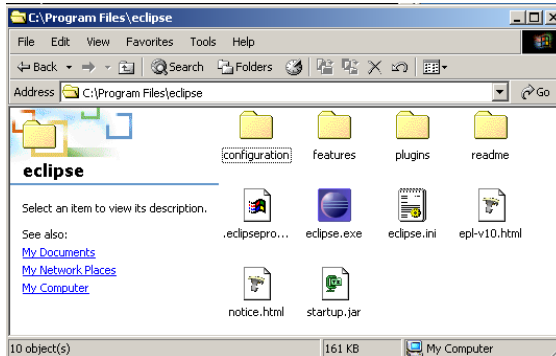
Eclipse is a modular software, but ever summer there are bundled released. The link is:

- <http://www.eclipse.org/downloads/>

I recommend the complete "Eclipse IDE for C/C++ Developers" bundle, which already contains the CDT. If you download a different bundle, you will probably have to install the CDT manually, as described in the section called “Installing the CDT”.

The file is about 86 MB in size, so it will take a while to download. You will end up with a .ZIP file. Use either FilZip [http://www.filzip.com/] or your favorite ZIP Program (Windows XP/Vista/7 and Mac OS X have .ZIP support build in) to unpack the file. Move the unpacked folder to any location, for example C:\Program Files\eclipse. You can now start Eclipse by double-clicking it.

Figure 12. Eclipse installed into C:\Program Files\eclipse



First Run of Eclipse

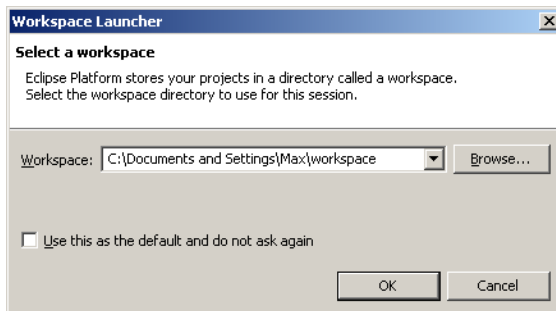
However you installed eclipse, you should now be able to run it. Double-click the icon or start the appropriate script in UNIX and Eclipse's splash-screen will appear:

Figure 13. Eclipse splash screen



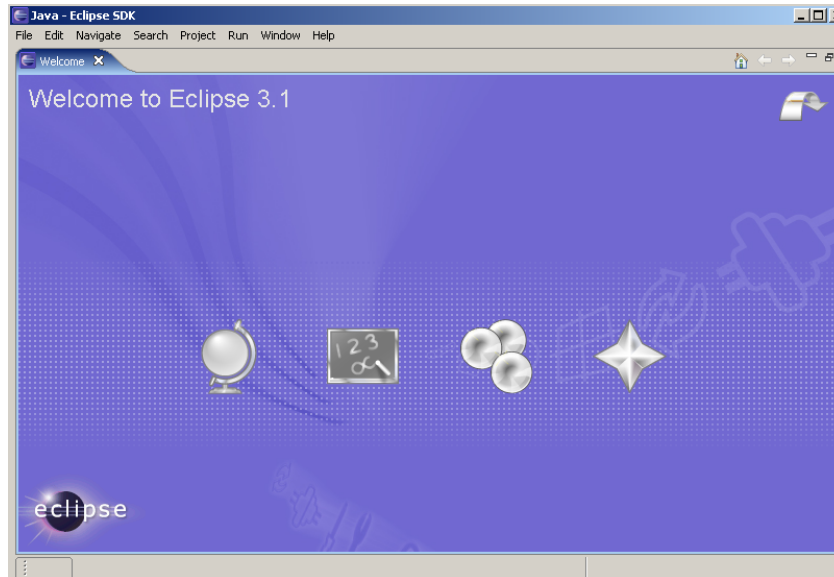
Immediately after that Eclipse will ask you for your workspace location. It defaults to a place within your personal settings. It is a good idea to use the default workspace, you may want to note where it is located.

Figure 14. Eclipse asking for workspace



If you always want to use the same workspace, you may select the Use this as the default... and you'll never have to worry about workspaces again. This is usually a good idea once you've used Eclipse for a while. Finally Eclipse starts up with the welcome screen:

Figure 15. Eclipse welcome screen



And if you select the "Go to the workbench" in the top right corner, then you are right in Eclipse. However, since we downloaded the runtime only, there are additional tools needed to start programming. We want to develop in C++, so we will just continue with the next section.

Installing the CDT

Note

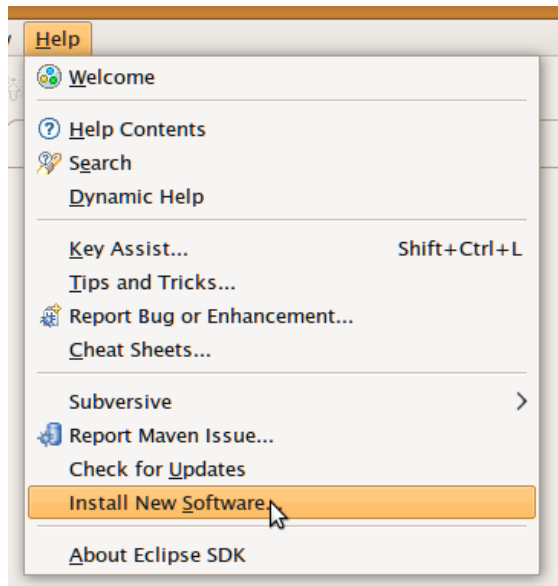
This is only required if you did not download the CDT version as described above. Please check if you are able to create a new C++ project (as described in the section called "Hello, World!") before going through this section!

Note

This section described the current (3.5 and 3.6) version of Eclipse. For the previous version (3.4) Please see the section called "Installing the CDT").

In the "Help" menu select "Install New Software..."

Figure 16. Select Install New Software... from the help menu

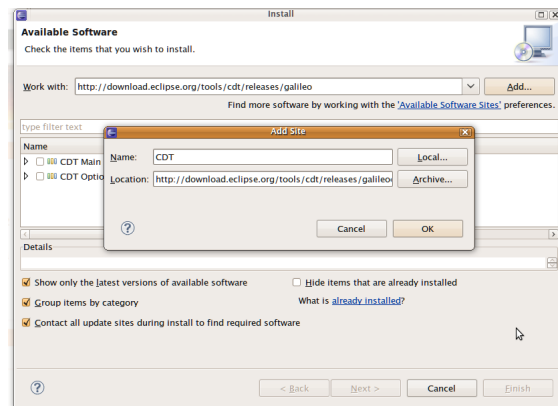


This will show you the list of available software update sites. If you are lucky you already have the CDT update site configured. Search for an entry which contains the String "cdt", for example <http://download.eclipse.org/tools/cdt/releases/helios>. If CDT is not available, add it (using the "Add..." button), adding <http://download.eclipse.org/tools/cdt/releases/helios>

Please note: It is important to install the right Version of CDT for your version of eclipse:

- For Eclipse 3.6 (Helios): Use <http://download.eclipse.org/tools/cdt/releases/helios>
- For Eclipse 3.5 (Galileo): Use <http://download.eclipse.org/tools/cdt/releases/galileo>

Figure 17. Available Software Update page with Add... opened



When you have found the CDT site, it will give you two entries: CDT Main Features and CDT Optional Features. Expand both, and find the latest version of the CDT. Make sure you select at least the following:

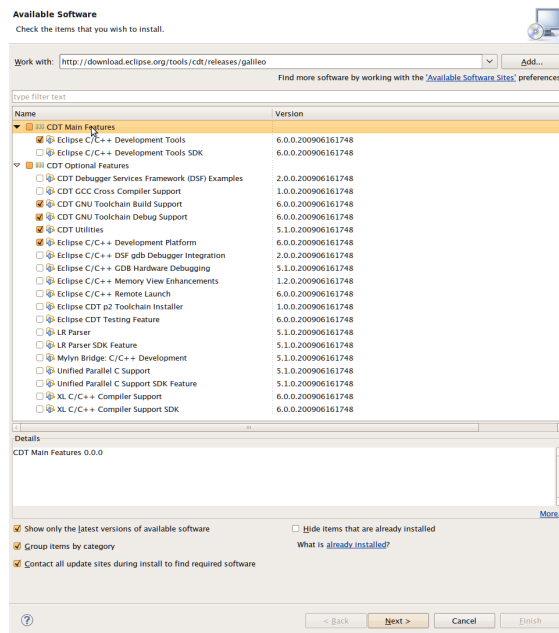
- Eclipse C/C++ Development Tools

Setting up Eclipse CDT on Windows, Linux/Unix, Mac OS X

- CDT GNU Toolchain Build Support
- CDT GNU Toolchain Debug Support
- Eclipse C/C++ Development Platform

Do not select all items! Some of these require dependencies from other projects, which may not be installed and thus fail to install. Select only the features you need!

Figure 18. Select CDT from the Update Site



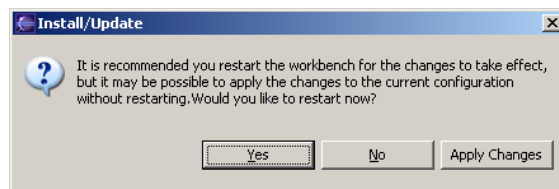
The select "Next..."

You will have to confirm the selection with "Next".

And accept the license agreement with "Finish".

Downloading and installing will take a while. Once its done it will ask you to restart Eclipse. This is a good idea, so select "Yes".

Figure 19. Restarting the workbench



Once Eclipse has restarted you now need to configure it for your computer.

Configuring the CDT

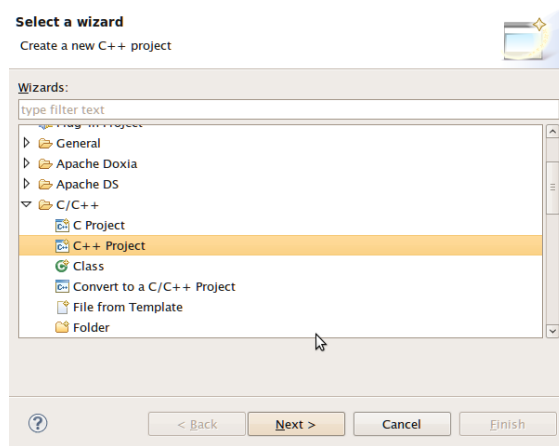
Fortunately, this is very easy. If your path is set correctly, there should be absolutely nothing you need to configure. This is especially true if you followed these instructions for Windows systems.

On some Unix systems you might have to change your "make" program to "gmake". You will find the setting in Window / Preferences. Then expand "C / C++", then "Make" and select "New Make Projects". At build command, de-select "use default" and at "Build command" enter "gmake".

Hello, World!

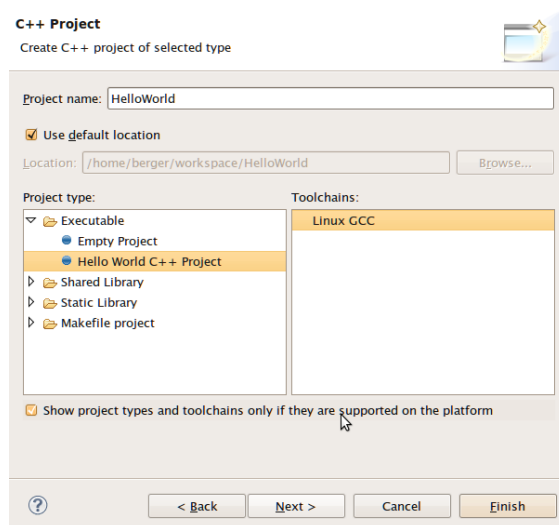
Once you are in Eclipse, you are given an empty workspace. You now have to start a new project. To do so, select "File" / "New" / "Project...". Expand the section "C++" and select "C++ Project", then click "Next >".

Figure 20. New Project screen



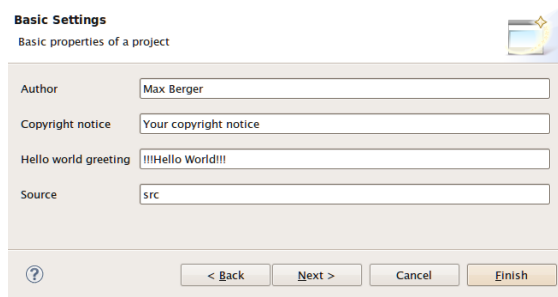
On the next screen, you have to give your project a name. In this case, it will be "HelloWorld", however, you may use any name you like. Also, you have to select a toolchain, if you followed my instructions you are using the GNU Toolchain, and it should automatically give you the right option. Click "Next".

Figure 21. New Project Name



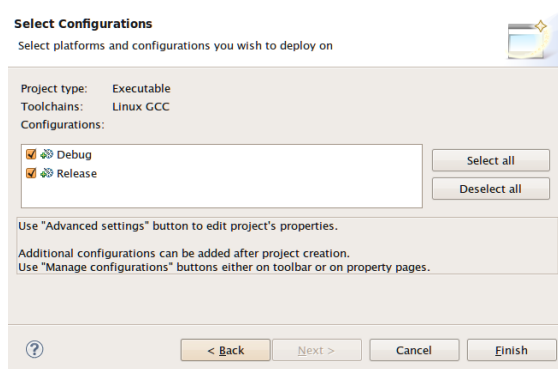
The next screen contains some Basic settings. Fill in what you like:

Figure 22. Basic Settings



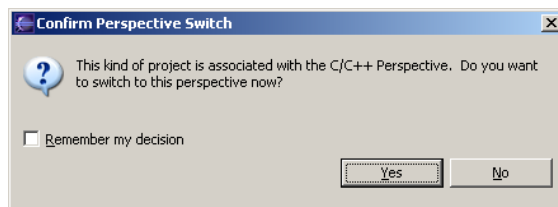
In the last setting you can choose output formats, it is always good to have a release and a debug configuration. Click "Finish".

Figure 23. New Project Platforms



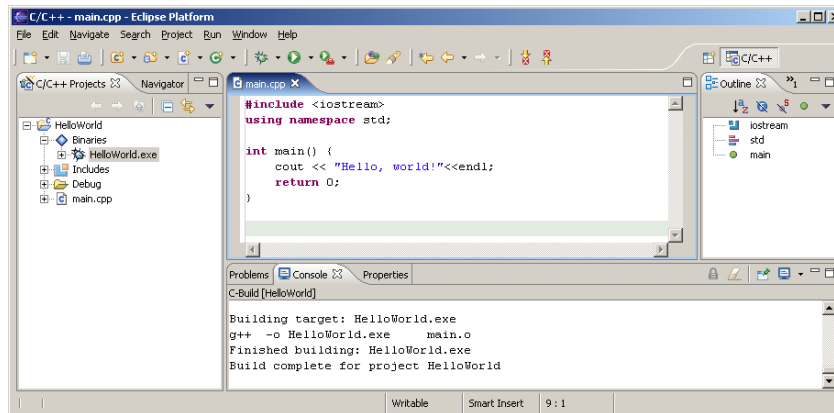
Eclipse will now generate a few things, and then ask you if you want to switch to the C/C++ Perspective. This is a good idea, so say yes.

Figure 24. Perspective Switch



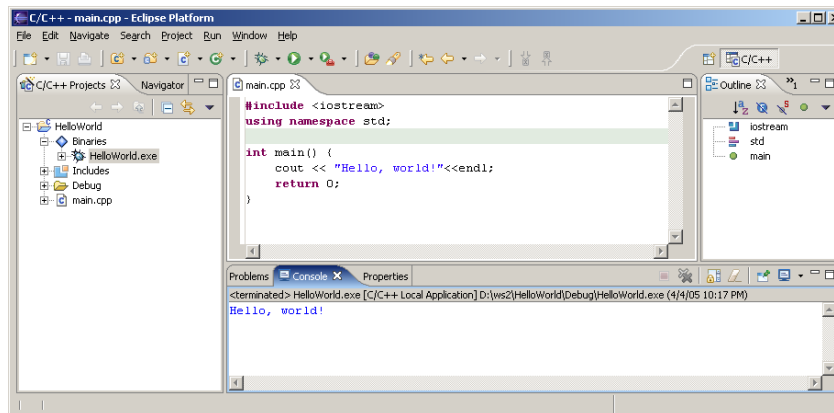
Great. You have a project now, and it does contain some sample code! You will immediately get an editor window for your project. Eclipse will also auto-build your project every time you save.

Figure 25. Example Hello World application



Now here comes the tricky part: On the left pane, select "C/C++ Projects", expand "Binaries" and you should see and executable (`HelloWorld.exe`). Now right-click that executable, and select "Run" / "Run Local C/C++ Application". If everything goes well your output will be in the bottom right window in the "Console" tab and it should say "Hello, World".

Figure 26. Running the example Hello World application



Congratulations! You have successfully installed a compiler, a build system and an IDE. You have successfully created, edited, compiled and run a project. You should now be able to start your own projects!

Common Problems

If you have followed these instructions everything should work. However, you may have ran into trouble, and then decided to look for the manual (at least, that's the way I would have done it). So now you have a problem and need an answer:

How to fix most of the errors on Windows

Make sure you have done the following things:

- Installed the CDT
- Installed (not just downloaded) MinGW
- Installed (not just downloaded) MSYS

- Set up your path environment variable

Especially made sure you did the last step. You *will* need to restart eclipse (full restart with shutdown, File / Restart is not sufficient). This solves about 99% of all support mails I've got so far.

Build error (Exec error:Launching failed), CreateProcess: make -k all error=2,

You have just tried to build the hello world program, and you get this error message instead of an executable. This means that **make** is not in your path. Open up a command prompt (In OS X: Terminal in Applications/Utilities, in Windows: Start/Run, type in cmd) and type in **make**. If that doesn't work, try **gmake**.

If **gmake** worked, see the section called "Configuring the CDT".

If neither worked, make sure you install make (See the section called "Setting up a compiler") and set your path (See the section called "Environment Variables" in the case of Windows).

To check your path (on windows), open up **cmd** and type in **echo %path%**. This should show the path to MSYS and MinGW. Also, make sure that you restarted Eclipse (or cmd if you are testing) after setting your path.

If you are on Windows, and you have installed MinGW, but not MSYS, you may have an executable called **mingw-make**. In this case you have to go to the section called "Configuring the CDT" and configure appropriately. It is possible to just use mingw-make and no MSYS at all, however, mingw-make has some limitations. Eclipse CDT managed makefiles may or may not work with it. Please see the MinGW FAQ [<http://www.mingw.org/mingwfaq.shtml#faq-mingw32-make.exe>] for more information.

/bin/sh: line 1: g++: command not found, Error launching external scanner info generator

This error message means that g++ is either not installed or not in your path. Check your path settings as described in the section called "Build error (Exec error:Launching failed), CreateProcess: make -k all error=2,", but this time try the commands: **gcc --version** and **g++ --version**. If gcc works, but g++ doesn't, it means you have only installed the C and not the C++ version of the gcc compiler, which happens quite frequently on Linux distributions. Check if you have all needed packages installed, and check the section called "Setting up a compiler".

If you are on windows, and neither of them worked, install MinGW and set your path environment variable. If only gcc one worked, reinstall MinGW and don't forget to select the C++ compiler!

No output or only sometimes output

If you are on windows and use Eclipse 3.1 with CDT 3.0.0 there is a bug. See the section called "Configuring the CDT".

Please note that debug sessions in Windows have their own console window (a black console window) and do not appear in the regular Eclipse console. If you're running a debug session, please watch which windows appear in your task bar.

Error launching 'cygpath' command

If you followed these instructions you have installed MSYS instead of cygwin. You may safely ignore this error message.

I do not have the option to start a C++ project

You have not installed the CDT. See the section called "Installing the CDT".

Error 1, open output file blabla.exe: Permission denied

Every time I start Eclipse on my laptop, I can only compile and run a program once. After that it asks if I want to run it with errors every time. The compiler says this:

```
Building target: Project01Test.exe
Invoking: GCC C++ Linker
g++ -oProject01Test.exe ./test.o
C:\MinGW\bin\..\lib\gcc\mingw32\3.4.2\..\..\..\..\mingw32\bin\ld.exe: cannot
open output file Project01Test.exe: Permission denied
collect2: ld returned 1 exit status
make: *** [Project01Test.exe] Error 1
make: Target `all' not remade because of errors.
Build complete for project Project01Test
```

Answer: Your program may still be running. Try stopping it by using the small red square on the console window (the one for your program). Another way is switching to the "Debug" perspective, selecting your running program, and stopping it there (also the small red square).

The debugger doesn't work (on windows, with MinGW)

Unfortunately gdb is not included in the current (4.1.1 or 5.0.2) version of MinGW. See the section called "GDB (optional)".

Incorrect command line argument: -k'

Make sure you are using the make programs provided by MinGW. If your output in the console shows something like:

```
make -k clean all
MAKE Version 5.2 Copyright (c) 1987, 2000 Borland
Incorrect command line argument: -k
```

Then you have make installed from a previous installation of Borland C++. You have several choices:

- Adjust your PATH environment variable to have the MinGW / MSYS installation come before Borlands tools. Please be warned that this may break your Borland tools!
- Remove the path to the Borland tools from your PATH. This will definitely break your Borland tools.
- Download "mingw32-make". This is an option when installing MinGW. Make sure you set your make setting to be "mingw32-make". If you still get an error, try setting it for the build settings in your project. In this case you may even skip the installation of MSYS, but you will get limited functionality.

A Java Runtime Environment (JRE) or Java Development Kit (JDK) must be available...

There are several possible reasons for that:

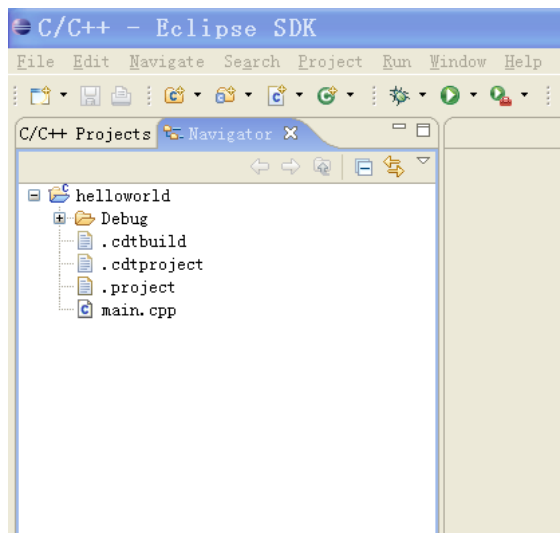
- You have not installed Java. Please see the section called “Java”.
- Your "path" environment is messed up (Windows). Please see the section called “Environment Variables”. Make sure **C:\windows\system32** is in your path (should be there by default).
- java.com [<http://www.java.com>] has a button called `verify installation`.

I have no binaries

If you have no binaries folder, then two things may have happened

- You are not looking at the C/C++ Project view. Make sure you are in the C++ perspective and "C/C++ Projects" is active. An example of this situation is shown in Figure 27, “The Navigator view instead of the C/C++ Projects view”: Click on "C/C++ Projects" to fix.
- Your program didn't compile. Check the output of the "Console" Window. It is either an error in your program or a configuration error. For configuration errors, check the other problems.
- If you do have a binaries folder, then make sure you run you program by right-clicking (on the mac: hold down ctrl and click) on the binary, and then selecting Run / Run as C/C++ Application. Just hitting the run button will only work after you have done that at least once!

Figure 27. The Navigator view instead of the C/C++ Projects view



Unable to access jarfile startup.jar

This problem happens on Windows when you moved Eclipse out of its directory instead of creating a shortcut. Please move it back into the Eclipse directory, then drag'n'drop it using the right mouse button, where you can select "Create Shurtcut"

Problems when CYGWIN is installed on Windows

I personally do not recommend the installation of cygwin, but rather the installation of MinGW and MSYS as described in the section called “Windows compiler”. However, the following problems have been reported by users:

Binaries require cygwin.dll

Eclipse prefers to use cygwin if it is installed, and will do everything to manipulate the path to include cygwin if it is installed. Binaries will therefore by default be linked against the cygwin libraries. Possible workarounds:

- add `-mno-cygwin` to your compiler settings
- Overwrite the path variable in eclipse: In the Project Properties: C/C++ Build -> Environment -> User Variables -> New. Select PATH, remove the cygwin directory and select Replace as Operation.

Launch failed Reason: Unable to set working directory

Your workspace or your eclipse installation may use a path with includes spaces, such as `C:\Documents and Settings`. Eclipse sometimes fails in this case. Try creating your workspace in a different directory.

Problems not covered here

If you are still having trouble, you may try and send me an email. Please be aware that I may not respond to every email, as I am doing this support mainly as a hobby (unless you're in my class). Make sure your email includes the following. Please send the complete output!

- The contents of your PATH environment variable (in Windows: `echo %PATH%`. In Linux / Mac OS X: `echo $PATH`).
- Version of GCC you're using (`gcc --version`)
- Version of Make you're using (`make --version` or `gmake --version`)
- Version of Eclipse you're using
- Version of the CDT you're using
- The complete output of your "Console" window (at the bottom of eclipse) when your error occurs.
- The steps you did so before the problem occurred.

Older Instructions

Sometimes you may not be happy with the current version of a certain program. I have left instructions for the older versions here in case you need them:

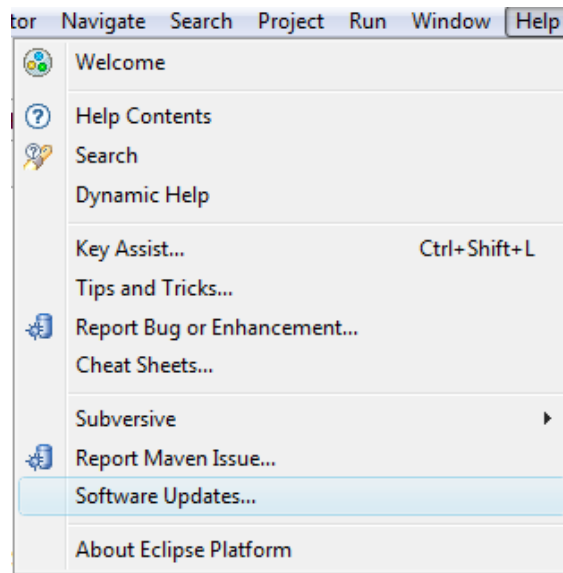
Installing the CDT on Eclipse 3.4

Note

This is only required if you did not download the CDT version as described above. Please check if you are able to create a new C++ project (as described in the section called "Hello, World!") before going through this section!

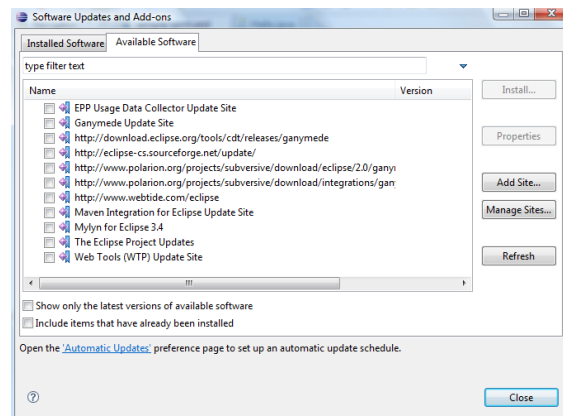
In the "Help" menu select "Software Updates..."

Figure 28. Select Software Updates... from the menu



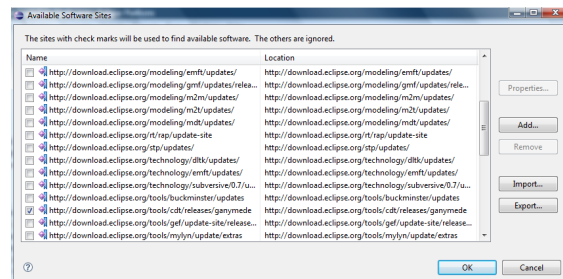
This will show you the list of available software update sites. If you are lucky you already have the CDT update site configured. Search for an entry which contains the String "cdt", for example `http://download.eclipse.org/tools/cdt/releases/ganymede`.

Figure 29. Main Software Update page



If there is no site for cdt available, go to "Manage Sites", and you will get a list of sites.

Figure 30. Manage Software Update sites



Setting up Eclipse CDT on Windows, Linux/Unix, Mac OS X

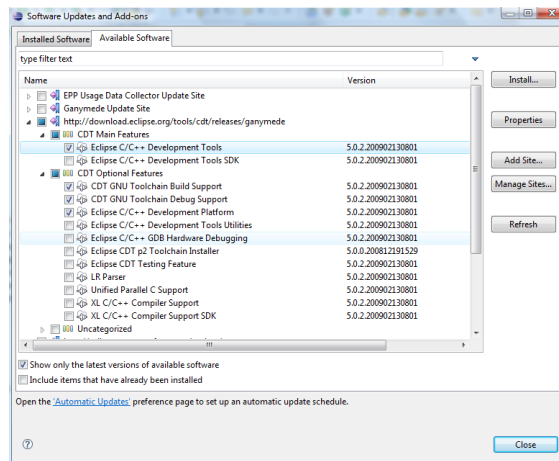
Again, search for a site containing "CDT". If there is no site available, add it (using the "Add..." button), adding <http://download.eclipse.org/tools/cdt/releases/ganymede> (the address may be different in future versions of Eclipse, this is for 3.4!)

Also, make sure the checkbox next to the Address is checked. Otherwise the site is configured, but ignored by Eclipse. Leave this page and go back to the main Software update page.

Expand the CDT site, and find the latest version of the CDT. Make sure you select at least the following:

- Eclipse C/C++ Development Tools
- CDT GNU Toolchain Build Support
- CDT GNU Toolchain Debug Support
- Eclipse C/C++ Development Platform

Figure 31. Select CDT from the Update Site

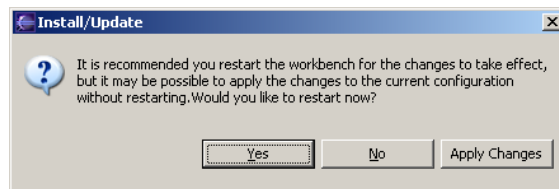


The select "Install..."

You will have to confirm the selection with "Finish"

Downloading and installing will take a while. Once its done it will ask you to restart Eclipse. This is a good idea, so select "Yes".

Figure 32. Restarting the workbench

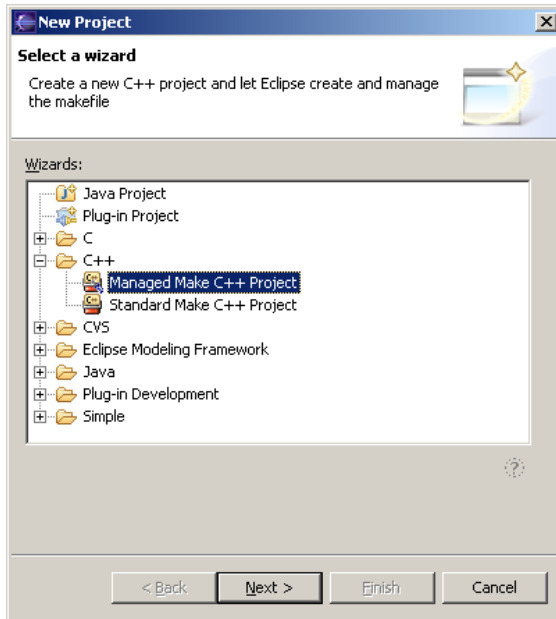


Once Eclipse has restarted you now need to configure it for your computer.

Hello, World! in older versions of CDT

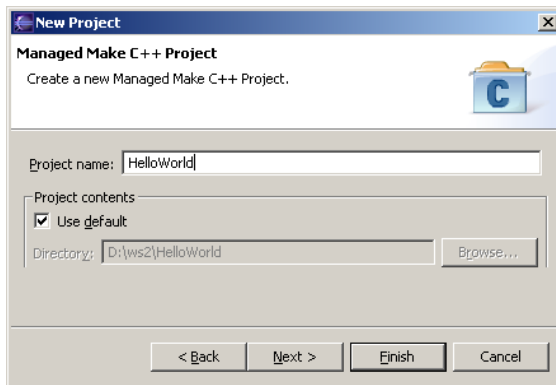
Once you are in Eclipse, you are given an empty workspace. You now have to start a new project. To do so, select "File" / "New" / "Project...". Expand the section "C++" and select "Managed Make C++ Project", then click "Next >".

Figure 33. New Project screen



On the next screen, you have to give your project a name. In this case, it will be "HelloWorld", however, you may use any name you like. Leave the "Use default" in "Project Contents" checked.

Figure 34. New Project Name



The next two settings about "Project Type" and additional settings are usually OK, so we'll just leave them:

Figure 35. New Project Platforms

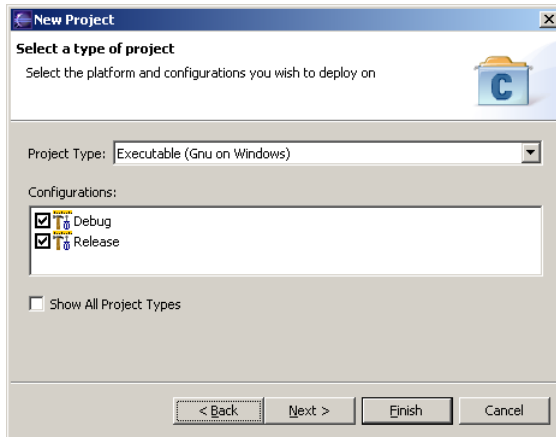
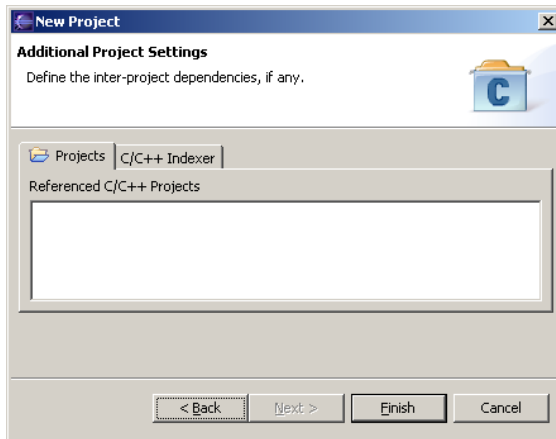
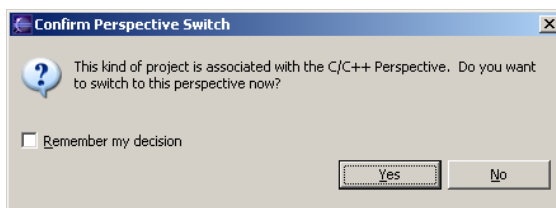


Figure 36. New Project Settings



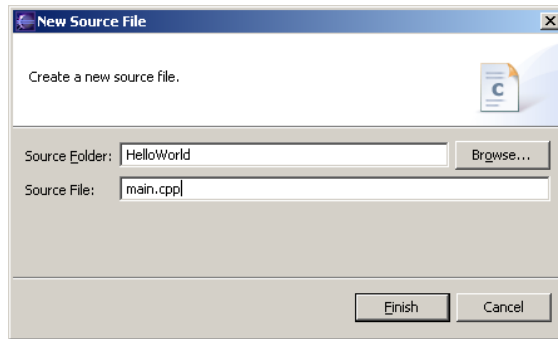
Eclipse will now generate a few things, and then ask you if you want to switch to the C/C++ Perspective. This is a good idea, so say yes.

Figure 37. Perspective Switch



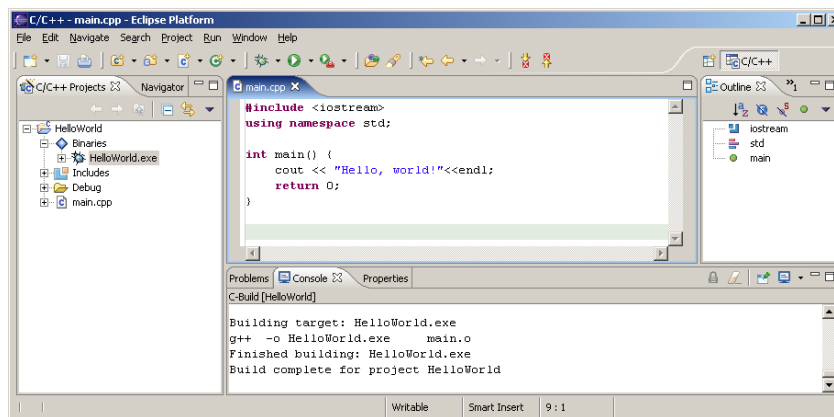
Great. You have a project now. However, it currently does not have any files. So select "File" / "New" / "C Source File". It will then ask you for the name of the file, type in something like "main.cpp".

Figure 38. Create a new Source File



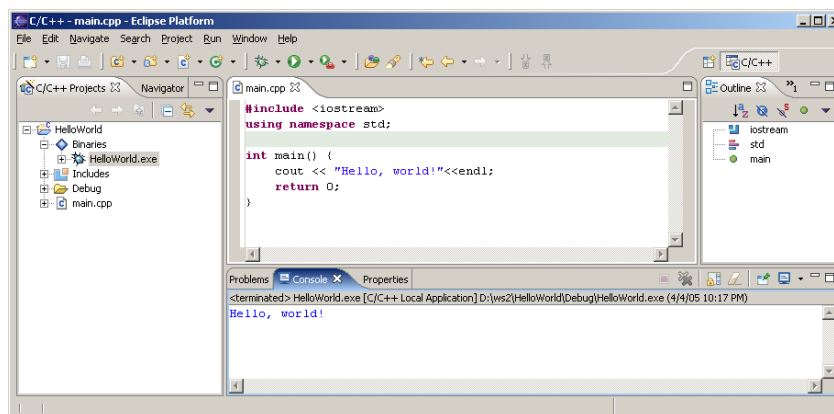
You will immediately get an editor window for your file. Eclipse will also auto-build your project every time you save. So type in something like this and hit save, and it should compile automatically:

Figure 39. Example Hello World application



Now here comes the tricky part: On the left pane, select "C/C++ Projects", expand "Binaries" and you should see and executable (HelloWorld.exe). Now right-click that executable, and select "Run" / "Run Local C/C++ Application". If everything goes well your output will be in the bottom right window in the "Console" tab and it should say "Hello, World".

Figure 40. Running the example Hello World application



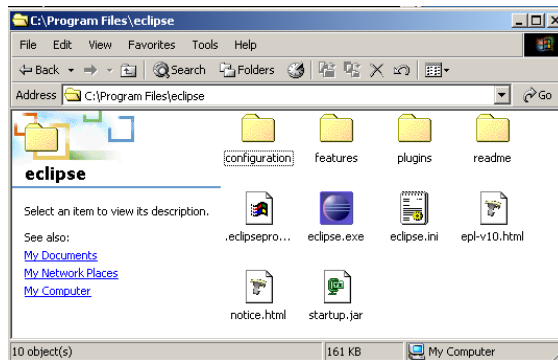
Congratulations! You have successfully installed a compiler, a build system and an IDE. You have successfully created, edited, compiled and run a project. You should now be able to start your own projects!

Eclipse 3.1 with CDT 3.0

Downloading Eclipse 3.1

Now we are finally ready to install Eclipse. Go to the Eclipse website [<http://www.eclipse.org/downloads/>] and look for "Downloads". It will automatically try to figure out your OS and give you an option like "Download now: Eclipse Platform SDK 3.1, Windows.". Do it. You will receive a .ZIP file. Use either FilZip [<http://www.filzip.com/>] or your favorite ZIP Program (Windows XP and Mac OS X have .ZIP support build in) to unpack the file. Move the unpacked folder to any location, for example `C:\Program Files\eclipse`. You can now start Eclipse by double-clicking it.

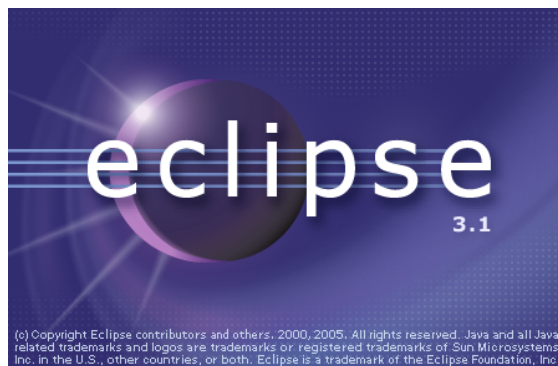
Figure 41. Eclipse installed into `C:\Program Files\eclipse`



First Run of Eclipse

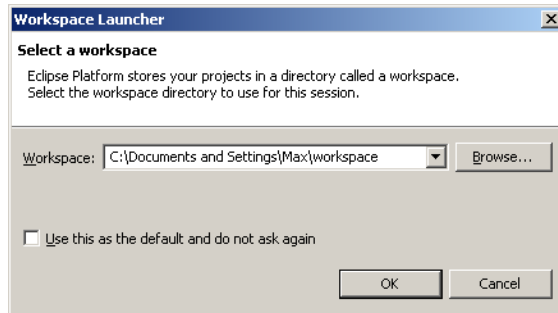
However you installed eclipse, you should now be able to run it. Double-click the icon or start the appropriate script in UNIX and Eclipse's splash-screen will appear:

Figure 42. Eclipse splash screen



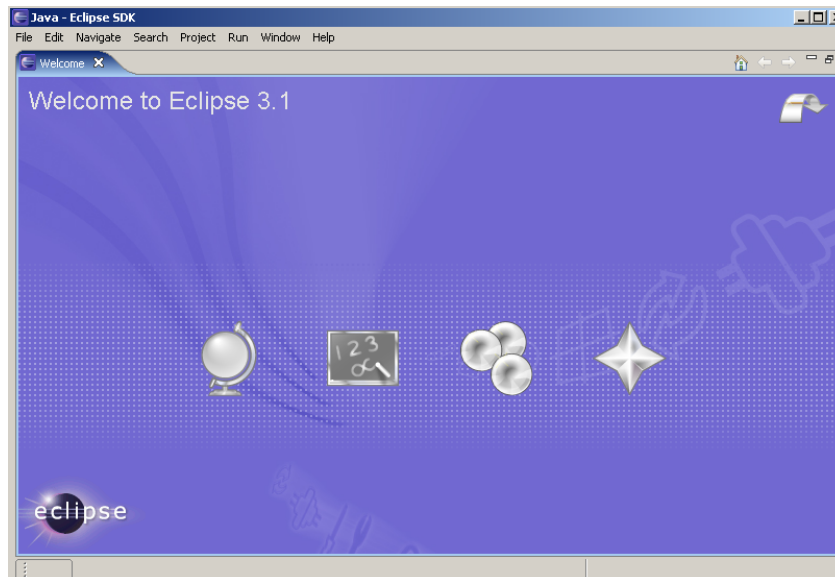
Immediately after that Eclipse will ask you for your workspace location. It defaults to: `C:\Program Files\eclipse\workspace` which is actually very bad. Depending on where you want to use Eclipse, please set your workspace to the appropriate folder. If you are in a computer lab, check their policy on personal home folders. If you are on your own computer, a place within your personal settings is usually best:

Figure 43. Eclipse asking for workspace



If you always want to use the same workspace, you may select the Use this as the default... and you'll never have to worry about workspaces again. This is usually a good idea once you've used Eclipse for a while. Finally Eclipse starts up with the welcome screen:

Figure 44. Eclipse welcome screen



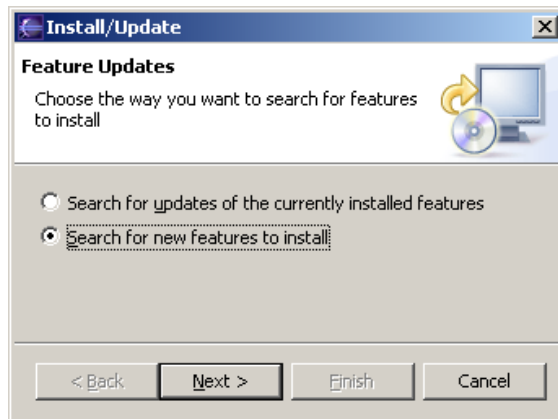
And if you select the "Go to the workbench" in the top right corner, then you are right in Eclipse and you can start developing in Java. However, since we want to develop in C++ just continue with the next section.

Installing the CDT

Eclipse by default comes with support for programming Java, the support for C/C++ (the C Development Toolkit) has to be installed as an update.

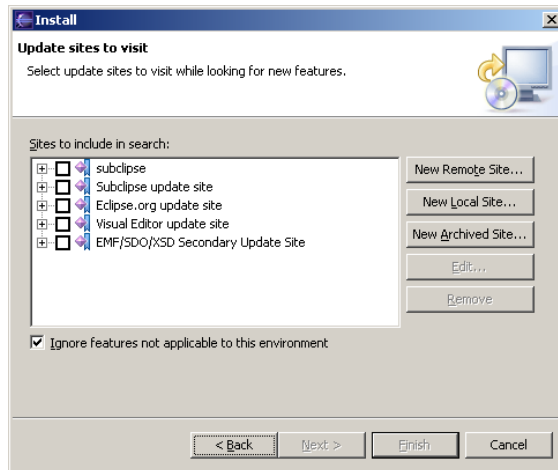
In the "Help" menu select "Software Updates" and the "Find and Install...". You should get something like:

Figure 45. Find and Install software updates



Select "Search for new features to install", and then "Next >". You should get:

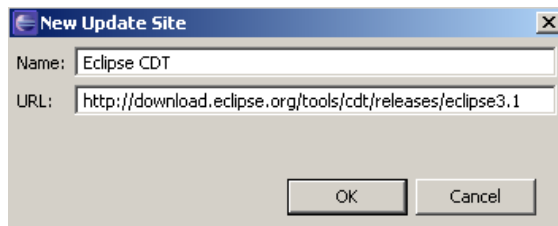
Figure 46. Select update sites



Leave "Ignore features not applicable to this environment" checked and de-select all update sites (you will probably have less in there than I do). Select "New Remote Site" and then enter the following information:

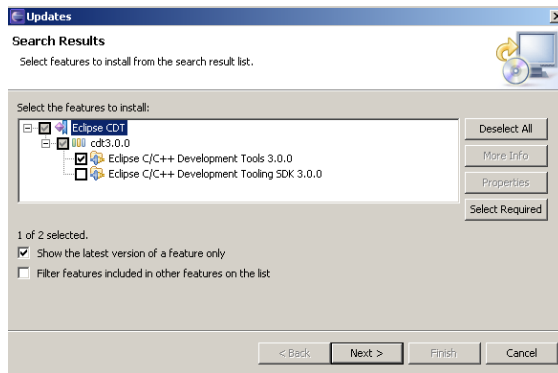
Note: What name you enter does not matter. Here is the URL for cut-n-paste: <http://download.eclipse.org/tools/cdt/releases/eclipse3.1>

Figure 47. Add new update site



Hit "OK". Now select "Eclipse CDT" and then "Next >". It should connect to the Eclipse CDT update site and look for the newest version. Then it displays a window like this one:

Figure 48. Select CDT to install



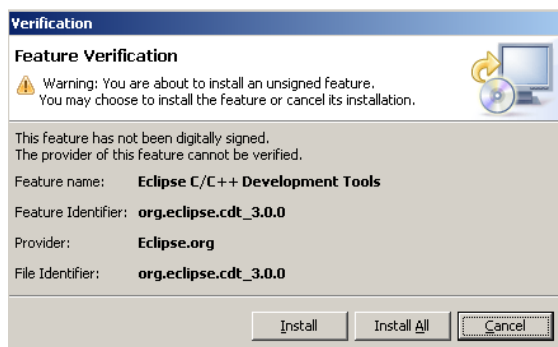
Select the latest version of the "Eclipse C/C++ Development Tools". (3.0.1 at the time of this writing) Do not select any other features. Hit "Next >".

In the next window, you will have to "accept" the license, and then select "Next >".

It will again show you an overview, which you can just accept and select "Finish".

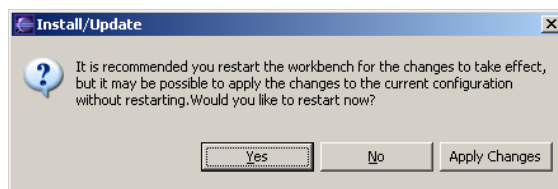
It will warn you that the Eclipse CDT is an "unsigned feature". But you can just ignore that and select "Install All".

Figure 49. Unsigned JAR



Downloading and installing will take a while. Once its done it will ask you to restart Eclipse. This is a good idea, so select "Yes".

Figure 50. Restarting the workbench



Once Eclipse has restarted you now need to configure it for your computer.

Eclipse 3.1 with CDT 3.0.0 (and 3.0.1) has a bug on windows! If you are on windows, please close eclipse, and delete the file spawner.dll in eclipse\plugins\org.eclipse.cdt.core.win32_3.0.0\os\win32\x86. This bug

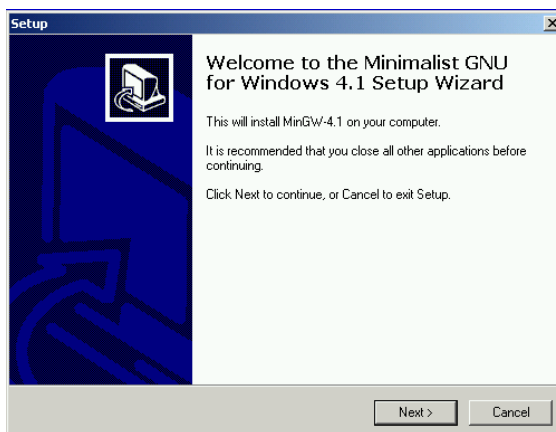
appears every time you try and run short programs (they will not show any output). More information is available in Eclipse Bug 102043 [https://bugs.eclipse.org/bugs/show_bug.cgi?id=102043]. This bug is fixed in CDT 3.0.2.

MinGW 4.x

MinGW 4.x comes with a new installer that asks much more questions than the old one. The current (Aug 05) version is MinGW 4.1.1.

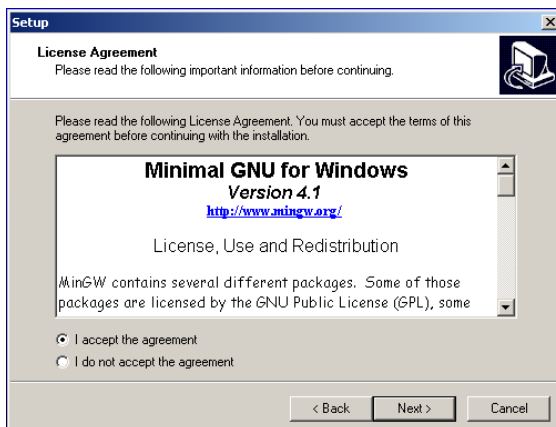
Please note: The MinGW 4.x installer downloads parts of the MinGW suite during the install! You must have an internet connection during the install. If this is not an option for you, download the last version (3.1)

Figure 51. MinGW 4.1 install



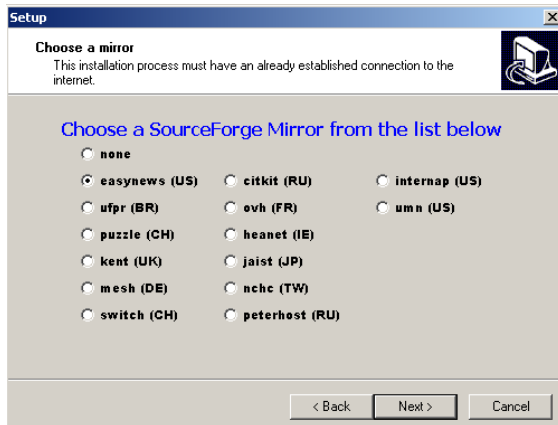
Most installation options are pretty straight forward. You will have to accept the license agreement:

Figure 52. MinGW licence



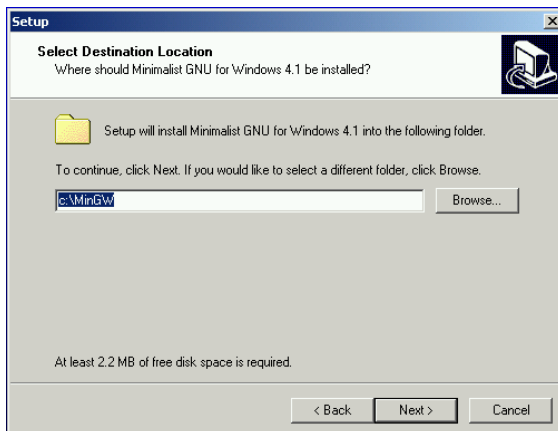
It will ask you for a download mirror. Of course, you should pick one close to your country. If you are installing from home in the us, use a commercial mirror, if you are installing from a university connection, chose a university mirror.

Figure 53. Mirror Selection



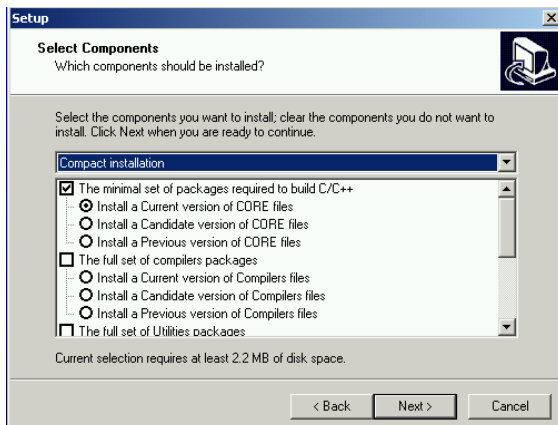
When installing MinGW, it is advisable to use the default directory `C:\MinGW`. Do not use a path that contains spaces, this will give you problems later on.

Figure 54. MinGW installation directory



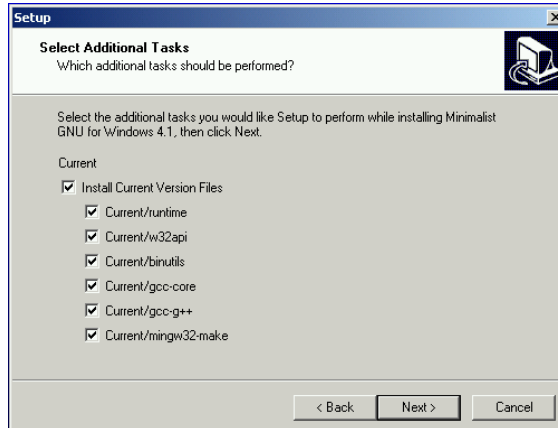
If all you need MinGW for is compiling your programs from within Eclipse, the Compact install should be enough:

Figure 55. MinGW installation components



Next, it will ask you for additional tasks to perform. Select all of them:

Figure 56. Additional Tasks

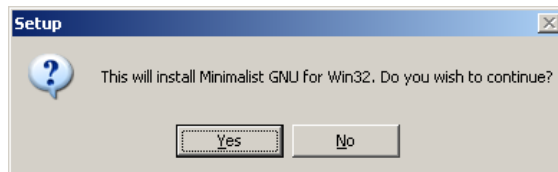


MinGW will download and install your selected components. After a little while your installation is done. You will now need to install MSYS.

MinGW 3.1

At the time of this writing this was "Download MinGW-3.1.0-1.exe", but the version number may be higher now. Once downloaded, start the program. It should look similar to this:

Figure 57. MinGW 3.1 install



If you accept all the default options MinGW should install just fine.

Feedback

Do you have any comments how this document could be improved? Email the author. I'll be happy to make any changes that make the setup of the Eclipse CDT easier, or include information that is missing in this paper.

A. GNU Free Documentation License

PREAMBLE

The purpose of this License is to make a manual, textbook, or other functional and useful document "free" in the sense of freedom: to assure everyone the effective freedom to copy and redistribute it, with or without modifying it, either commercially or noncommercially. Secondly, this License preserves for the author

and publisher a way to get credit for their work, while not being considered responsible for modifications made by others.

This License is a kind of "copyleft", which means that derivative works of the document must themselves be free in the same sense. It complements the GNU General Public License, which is a copyleft license designed for free software.

We have designed this License in order to use it for manuals for free software, because free software needs free documentation: a free program should come with manuals providing the same freedoms that the software does. But this License is not limited to software manuals; it can be used for any textual work, regardless of subject matter or whether it is published as a printed book. We recommend this License principally for works whose purpose is instruction or reference.

APPLICABILITY AND DEFINITIONS

This License applies to any manual or other work, in any medium, that contains a notice placed by the copyright holder saying it can be distributed under the terms of this License. Such a notice grants a world-wide, royalty-free license, unlimited in duration, to use that work under the conditions stated herein. The "Document", below, refers to any such manual or work. Any member of the public is a licensee, and is addressed as "you". You accept the license if you copy, modify or distribute the work in a way requiring permission under copyright law.

A "Modified Version" of the Document means any work containing the Document or a portion of it, either copied verbatim, or with modifications and/or translated into another language.

A "Secondary Section" is a named appendix or a front-matter section of the Document that deals exclusively with the relationship of the publishers or authors of the Document to the Document's overall subject (or to related matters) and contains nothing that could fall directly within that overall subject. (Thus, if the Document is in part a textbook of mathematics, a Secondary Section may not explain any mathematics.) The relationship could be a matter of historical connection with the subject or with related matters, or of legal, commercial, philosophical, ethical or political position regarding them.

The "Invariant Sections" are certain Secondary Sections whose titles are designated, as being those of Invariant Sections, in the notice that says that the Document is released under this License. If a section does not fit the above definition of Secondary then it is not allowed to be designated as Invariant. The Document may contain zero Invariant Sections. If the Document does not identify any Invariant Sections then there are none.

The "Cover Texts" are certain short passages of text that are listed, as Front-Cover Texts or Back-Cover Texts, in the notice that says that the Document is released under this License. A Front-Cover Text may be at most 5 words, and a Back-Cover Text may be at most 25 words.

A "Transparent" copy of the Document means a machine-readable copy, represented in a format whose specification is available to the general public, that is suitable for revising the document straightforwardly with generic text editors or (for images composed of pixels) generic paint programs or (for drawings) some widely available drawing editor, and that is suitable for input to text formatters or for automatic translation to a variety of formats suitable for input to text formatters. A copy made in an otherwise Transparent file format whose markup, or absence of markup, has been arranged to thwart or discourage subsequent modification by readers is not Transparent. An image format is not Transparent if used for any substantial amount of text. A copy that is not "Transparent" is called "Opaque".

Examples of suitable formats for Transparent copies include plain ASCII without markup, Texinfo input format, LaTeX input format, SGML or XML using a publicly available DTD, and standard-conforming simple HTML, PostScript or PDF designed for human modification. Examples of transparent image formats include PNG, XCF and JPG. Opaque formats include proprietary formats that can be read and edited only by proprietary word processors, SGML or XML for which the DTD and/or processing tools

are not generally available, and the machine-generated HTML, PostScript or PDF produced by some word processors for output purposes only.

The "Title Page" means, for a printed book, the title page itself, plus such following pages as are needed to hold, legibly, the material this License requires to appear in the title page. For works in formats which do not have any title page as such, "Title Page" means the text near the most prominent appearance of the work's title, preceding the beginning of the body of the text.

A section "Entitled XYZ" means a named subunit of the Document whose title either is precisely XYZ or contains XYZ in parentheses following text that translates XYZ in another language. (Here XYZ stands for a specific section name mentioned below, such as "Acknowledgements", "Dedications", "Endorsements", or "History".) To "Preserve the Title" of such a section when you modify the Document means that it remains a section "Entitled XYZ" according to this definition.

The Document may include Warranty Disclaimers next to the notice which states that this License applies to the Document. These Warranty Disclaimers are considered to be included by reference in this License, but only as regards disclaiming warranties: any other implication that these Warranty Disclaimers may have is void and has no effect on the meaning of this License.

VERBATIM COPYING

You may copy and distribute the Document in any medium, either commercially or noncommercially, provided that this License, the copyright notices, and the license notice saying this License applies to the Document are reproduced in all copies, and that you add no other conditions whatsoever to those of this License. You may not use technical measures to obstruct or control the reading or further copying of the copies you make or distribute. However, you may accept compensation in exchange for copies. If you distribute a large enough number of copies you must also follow the conditions in section 3.

You may also lend copies, under the same conditions stated above, and you may publicly display copies.

COPYING IN QUANTITY

If you publish printed copies (or copies in media that commonly have printed covers) of the Document, numbering more than 100, and the Document's license notice requires Cover Texts, you must enclose the copies in covers that carry, clearly and legibly, all these Cover Texts: Front-Cover Texts on the front cover, and Back-Cover Texts on the back cover. Both covers must also clearly and legibly identify you as the publisher of these copies. The front cover must present the full title with all words of the title equally prominent and visible. You may add other material on the covers in addition. Copying with changes limited to the covers, as long as they preserve the title of the Document and satisfy these conditions, can be treated as verbatim copying in other respects.

If the required texts for either cover are too voluminous to fit legibly, you should put the first ones listed (as many as fit reasonably) on the actual cover, and continue the rest onto adjacent pages.

If you publish or distribute Opaque copies of the Document numbering more than 100, you must either include a machine-readable Transparent copy along with each Opaque copy, or state in or with each Opaque copy a computer-network location from which the general network-using public has access to download using public-standard network protocols a complete Transparent copy of the Document, free of added material. If you use the latter option, you must take reasonably prudent steps, when you begin distribution of Opaque copies in quantity, to ensure that this Transparent copy will remain thus accessible at the stated location until at least one year after the last time you distribute an Opaque copy (directly or through your agents or retailers) of that edition to the public.

It is requested, but not required, that you contact the authors of the Document well before redistributing any large number of copies, to give them a chance to provide you with an updated version of the Document.

MODIFICATIONS

You may copy and distribute a Modified Version of the Document under the conditions of sections 2 and 3 above, provided that you release the Modified Version under precisely this License, with the Modified Version filling the role of the Document, thus licensing distribution and modification of the Modified Version to whoever possesses a copy of it. In addition, you must do these things in the Modified Version:

GNU FDL Modification Conditions

- A. Use in the Title Page (and on the covers, if any) a title distinct from that of the Document, and from those of previous versions (which should, if there were any, be listed in the History section of the Document). You may use the same title as a previous version if the original publisher of that version gives permission.
- B. List on the Title Page, as authors, one or more persons or entities responsible for authorship of the modifications in the Modified Version, together with at least five of the principal authors of the Document (all of its principal authors, if it has fewer than five), unless they release you from this requirement.
- C. State on the Title page the name of the publisher of the Modified Version, as the publisher.
- D. Preserve all the copyright notices of the Document.
- E. Add an appropriate copyright notice for your modifications adjacent to the other copyright notices.
- F. Include, immediately after the copyright notices, a license notice giving the public permission to use the Modified Version under the terms of this License, in the form shown in the Addendum below.
- G. Preserve in that license notice the full lists of Invariant Sections and required Cover Texts given in the Document's license notice.
- H. Include an unaltered copy of this License.
- I. Preserve the section Entitled "History", Preserve its Title, and add to it an item stating at least the title, year, new authors, and publisher of the Modified Version as given on the Title Page. If there is no section Entitled "History" in the Document, create one stating the title, year, authors, and publisher of the Document as given on its Title Page, then add an item describing the Modified Version as stated in the previous sentence.
- J. Preserve the network location, if any, given in the Document for public access to a Transparent copy of the Document, and likewise the network locations given in the Document for previous versions it was based on. These may be placed in the "History" section. You may omit a network location for a work that was published at least four years before the Document itself, or if the original publisher of the version it refers to gives permission.
- K. For any section Entitled "Acknowledgements" or "Dedications", Preserve the Title of the section, and preserve in the section all the substance and tone of each of the contributor acknowledgements and/or dedications given therein.
- L. Preserve all the Invariant Sections of the Document, unaltered in their text and in their titles. Section numbers or the equivalent are not considered part of the section titles.
- M. Delete any section Entitled "Endorsements". Such a section may not be included in the Modified Version.
- N. Do not retitle any existing section to be Entitled "Endorsements" or to conflict in title with any Invariant Section.

O. Preserve any Warranty Disclaimers.

If the Modified Version includes new front-matter sections or appendices that qualify as Secondary Sections and contain no material copied from the Document, you may at your option designate some or all of these sections as invariant. To do this, add their titles to the list of Invariant Sections in the Modified Version's license notice. These titles must be distinct from any other section titles.

You may add a section Entitled "Endorsements", provided it contains nothing but endorsements of your Modified Version by various parties--for example, statements of peer review or that the text has been approved by an organization as the authoritative definition of a standard.

You may add a passage of up to five words as a Front-Cover Text, and a passage of up to 25 words as a Back-Cover Text, to the end of the list of Cover Texts in the Modified Version. Only one passage of Front-Cover Text and one of Back-Cover Text may be added by (or through arrangements made by) any one entity. If the Document already includes a cover text for the same cover, previously added by you or by arrangement made by the same entity you are acting on behalf of, you may not add another; but you may replace the old one, on explicit permission from the previous publisher that added the old one.

The author(s) and publisher(s) of the Document do not by this License give permission to use their names for publicity for or to assert or imply endorsement of any Modified Version.

COMBINING DOCUMENTS

You may combine the Document with other documents released under this License, under the terms defined in section 4 above for modified versions, provided that you include in the combination all of the Invariant Sections of all of the original documents, unmodified, and list them all as Invariant Sections of your combined work in its license notice, and that you preserve all their Warranty Disclaimers.

The combined work need only contain one copy of this License, and multiple identical Invariant Sections may be replaced with a single copy. If there are multiple Invariant Sections with the same name but different contents, make the title of each such section unique by adding at the end of it, in parentheses, the name of the original author or publisher of that section if known, or else a unique number. Make the same adjustment to the section titles in the list of Invariant Sections in the license notice of the combined work.

In the combination, you must combine any sections Entitled "History" in the various original documents, forming one section Entitled "History"; likewise combine any sections Entitled "Acknowledgements", and any sections Entitled "Dedications". You must delete all sections Entitled "Endorsements".

COLLECTIONS OF DOCUMENTS

You may make a collection consisting of the Document and other documents released under this License, and replace the individual copies of this License in the various documents with a single copy that is included in the collection, provided that you follow the rules of this License for verbatim copying of each of the documents in all other respects.

You may extract a single document from such a collection, and distribute it individually under this License, provided you insert a copy of this License into the extracted document, and follow this License in all other respects regarding verbatim copying of that document.

AGGREGATION WITH INDEPENDENT WORKS

A compilation of the Document or its derivatives with other separate and independent documents or works, in or on a volume of a storage or distribution medium, is called an "aggregate" if the copyright resulting

from the compilation is not used to limit the legal rights of the compilation's users beyond what the individual works permit. When the Document is included in an aggregate, this License does not apply to the other works in the aggregate which are not themselves derivative works of the Document.

If the Cover Text requirement of section 3 is applicable to these copies of the Document, then if the Document is less than one half of the entire aggregate, the Document's Cover Texts may be placed on covers that bracket the Document within the aggregate, or the electronic equivalent of covers if the Document is in electronic form. Otherwise they must appear on printed covers that bracket the whole aggregate.

TRANSLATION

Translation is considered a kind of modification, so you may distribute translations of the Document under the terms of section 4. Replacing Invariant Sections with translations requires special permission from their copyright holders, but you may include translations of some or all Invariant Sections in addition to the original versions of these Invariant Sections. You may include a translation of this License, and all the license notices in the Document, and any Warranty Disclaimers, provided that you also include the original English version of this License and the original versions of those notices and disclaimers. In case of a disagreement between the translation and the original version of this License or a notice or disclaimer, the original version will prevail.

If a section in the Document is Entitled "Acknowledgements", "Dedications", or "History", the requirement (section 4) to Preserve its Title (section 1) will typically require changing the actual title.

TERMINATION

You may not copy, modify, sublicense, or distribute the Document except as expressly provided for under this License. Any other attempt to copy, modify, sublicense or distribute the Document is void, and will automatically terminate your rights under this License. However, parties who have received copies, or rights, from you under this License will not have their licenses terminated so long as such parties remain in full compliance.

FUTURE REVISIONS OF THIS LICENSE

The Free Software Foundation may publish new, revised versions of the GNU Free Documentation License from time to time. Such new versions will be similar in spirit to the present version, but may differ in detail to address new problems or concerns. See <http://www.gnu.org/copyleft/>.

Each version of the License is given a distinguishing version number. If the Document specifies that a particular numbered version of this License "or any later version" applies to it, you have the option of following the terms and conditions either of that specified version or of any later version that has been published (not as a draft) by the Free Software Foundation. If the Document does not specify a version number of this License, you may choose any version ever published (not as a draft) by the Free Software Foundation.

ADDENDUM: How to use this License for your documents

To use this License in a document you have written, include a copy of the License in the document and put the following copyright and license notices just after the title page:

Sample Invariant Sections list

Copyright (c) YEAR YOUR NAME. Permission is granted to copy, distribute and/or modify this document under the terms of the GNU Free Documentation License, Version 1.2 or any later version published by the Free Software Foundation; with no Invariant Sections, no Front-Cover Texts, and no Back-Cover Texts. A copy of the license is included in the section entitled "GNU Free Documentation License".

If you have Invariant Sections, Front-Cover Texts and Back-Cover Texts, replace the "with...Texts." line with this:

Sample Invariant Sections list

with the Invariant Sections being LIST THEIR TITLES, with the Front-Cover Texts being LIST, and with the Back-Cover Texts being LIST.

If you have Invariant Sections without Cover Texts, or some other combination of the three, merge those two alternatives to suit the situation.

If your document contains nontrivial examples of program code, we recommend releasing these examples in parallel under your choice of free software license, such as the GNU General Public License, to permit their use in free software.