

# Debian/GNU Linux Remote Services

Secure Shell, Virtual Network Computing , Remote Desktops

Károly Erdei

November 16, 2010



# Agenda

- 1 Remote Login
- 2 File Services
- 3 Secure Shell
- 4 SSH tunneling
- 5 SSH no password
- 6 VNC
- 7 RDP

# Agenda

- 1 Remote Login
- 2 File Services
- 3 Secure Shell
- 4 SSH tunneling
- 5 SSH no password
- 6 VNC
- 7 RDP

# Remote Login Services

## Application services to use remote hosts interactively

- Scenario: remote host offers interesting services:
  - Resources (CPU, memory, disk) provided by remote host
  - Files located on remote host
  - Programs installed on remote host
- Goal: use these remote services from local host
  - Use local host as a terminal to login to remote host
  - Run programs/commands on remote host
  - See output on local host (either Ascii terminal output or graphical output by X clients or some other way (vnc,rdp))
- Relevant protocols/systems:
  - TELNET (TCP/IP); rsh/rlogin (Unix/Linux), outdated
  - SSH suite: ssh/slogin (secure shell, secure login)
  - X-Windows X11 (network-transparent GUI)
  - Real VNC (virtual network computing/console)
  - MS Windows Terminal Server (remote desktop)

# The Remote Login Server - an application program

## SSH Server

### Process

- Master server waits for new connection requests SSH: port 22
- For each connection, it spawns a **slave server** to handle the connection
- Multiple sessions (from the same or different clients) may be active at the same time
- Slave server handles the connection
  - transfers data from local keyboard to remote host and outputs data from remote host on the local display
- OS must provide **pseudo terminal** for the slave server
  - Entry point to transfer characters to OS as if they came from a keyboard

## Using TELNET for testing services

### Testing services with TELNET

- At RISC used only for testing services on remote computer
- Giving port number as parameter for Telnet: 25, 80, 110,etc.
- Checking if a mail server is running

```
uhu:~> telnet bullfinch.risc.uni-linz.ac.at 25
```

```
Trying 193.170.37.222
```

```
Connected to bullfinch.risc.uni-linz.ac.at.
```

```
Escape character is '^['.
```

```
220 bullfinch.risc.uni-linz.ac.at ESMTP Sendmail 8.13.8/8.13.8/Debi
```

```
Sun, 19 Oct 2008 13:11:27 +0200; (No UCE/UBE) logging access from:
```

```
cm64-139.liwest.at(OK)-cm64-139.liwest.at [212.241.64.139]
```

```
quit
```

```
221 2.0.0 bullfinch.risc.uni-linz.ac.at closing connection
```

```
Connection closed by foreign host.
```

```
uhu:~>
```

# Telnet is outdated

SSH is the successor

## TELNET and Rsh/Rlogin outdated

- because of security problems
- All data are transferred in clear text
- Any listener between client and remote server can read everything
- True for any unencrypted connection, think on http !
- telnet-ssl replaces telnet/rlogin

## Replacement: Secure Shell (ssh, slogin)

- SSH suite is the modern replacement of TELNET and rlogin
- standard protocols for secure remote access over IP networks (RFCs: 4251-5254)
- All data are **encrypted** before they are transferred via IP
- Commercial implementations: [www.ssh.com](http://www.ssh.com) (MS Windows)
- Free implementations: [www.openssh.org](http://www.openssh.org), [www.putty.org](http://www.putty.org), etc.

# Agenda

- 1 Remote Login
- 2 File Services
- 3 Secure Shell
- 4 SSH tunneling
- 5 SSH no password
- 6 VNC
- 7 RDP



# File Services

File transfer, File sharing

## Application services to access files on remote hosts

- File transfer
  - Files are copied from one host to another
  - sftp (secure ftp), scp (secure remote copy)
  - Graphical tools: **gftp**, (kasablanca, etc.)
- File sharing
  - Files are accessed from a central server
  - Files are stored and backuped on central file server
  - Client applications operate on remote files like on local files
  - Transparent file access is provided by network file systems
  - NFS (Network File System), SMB (Server Message Blocks)

# FTP with gftp

The screenshot shows the gFTP 2.0.18 application window. The top menu bar includes FTP, Local, Remote, Bookmarks, Transfers, Logging, Tools, and Help. The main interface is divided into two panes. The left pane shows the local directory structure for /home/ke, listing files and folders such as .AbiSuite, .adobe, .amsn, .aptitude, and hihhle. The right pane shows the remote directory structure for hades.risc.uni-linz.ac.at [SSH2] [All Files]\*, listing files and folders such as .AbiSuite, .acrobat, .adobe, .config, and rhuc. Below the panes is a progress bar and a log window showing the connection details and directory listing process.

Host: hades.risc.uni-linz.ac.at Port: User: ke Pass: SSH2

Local Directory (/home/ke):

Filename	Size	User	Group
..	4,096	root	root
.AbiSuite	4,096	ke	ke
.adobe	4,096	ke	ke
.amsn	4,096	ke	ke
.aptitude	4,096	ke	ke
hihle	4,096	ke	ke

Remote Directory (hades.risc.uni-linz.ac.at [SSH2] [All Files]\*):

Filename	Size	User	Group	Date
..	0	0	0	Thu Oct 16 10:00:00
.AbiSuite	4,096	10200	10748	Thu Jun 2 16:00:00
.acrobat	4,096	10200	10748	Wed Feb 12 11:00:00
.adobe	4,096	10200	10748	Sun Sep 28 11:00:00
.config	4,096	10200	10020	Fri Feb 22 14:00:00
rhuc	4,096	10200	10020	Wed Jun 18 16:00:00

Log Window:

```

Opening SSH connection to hades.risc.uni-linz.ac.at
Running program /usr/bin/ssh -e none -l ke -p 22 hades.risc.uni-linz.ac.at -s sftp
3: Protocol initialization
3: Protocol version 3
Successfully logged into SSH server hades.risc.uni-linz.ac.at
1: Realpath .
1: Filenames (1 entries)
Loading directory listing /home/ke from server (LC_TIME=en_US.UTF-8)
Retrieving directory listing...
2: Open Directory /home/ke
2: File handle
3: Read Directory
3: Filenames (100 entries)
  
```

# NFS (Network File System)

## NFS: access to remote files

- Developed by Sun Microsystems
- Used in many Intranets to interconnect file systems
- Mainly for Unix/Linux computers
- Remote file system can be accessed like local files
  - A remote file system is **mounted** to an empty local directory
  - Files below this directory can be used like local files
  - No special file transfer commands needed, no file duplication arises
- Implemented on top of UDP

For security reasons, only used within an administrative domain

# Agenda

- 1 Remote Login
- 2 File Services
- 3 Secure Shell
- 4 SSH tunneling
- 5 SSH no password
- 6 VNC
- 7 RDP

# SSH features

## The SSH suite

### SSH - a client-server solution for network security

- client-server solution for network security
  - encryption: all data will be encrypted before sending from localhost to remote computer and vice versa
  - transparent for the user (does not notice background activities)
  - client side: login, authentication, data transfer, command execution

### SSH features

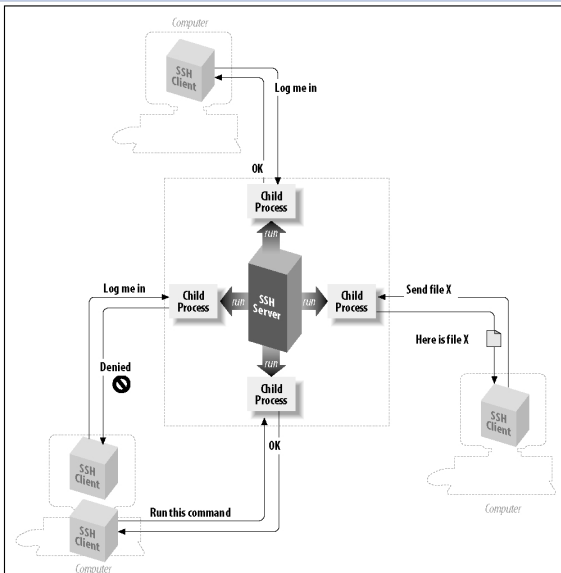
- it is a protocol: describes how to conduct secure communication over a network
- full, secure replacement for FTP and Telnet and the UNIX r-series of commands: rlogin, rsh, rcp, rexec
  - creates a secure channel for running a shell on the remote computer
  - sftp, scp is integrated in the protocol
- supports more authentication methods: password, public key, certificate, smart card, PAM and SecurID

# SSH features

## Security

- uses multiple high security algorithms and strong authentication methods
  - prevents such security threats as identity spoofing and man-in-the-middle attacks
  - man-in-the-middle attack: changing the IP in the packet you communicate with the remote computer, stating: I'm the remote computer
- Transparent and automatic tunneling of X11 connections
- Port forwarding or SSH tunneling: for arbitrary TCP/IP-based applications, such as e-mail
- Multiple channels that allow to have multiple terminal windows and file transfers going through one secure and authenticated connection

# The base services of SSH



# Complete Structure of the SSH protocol

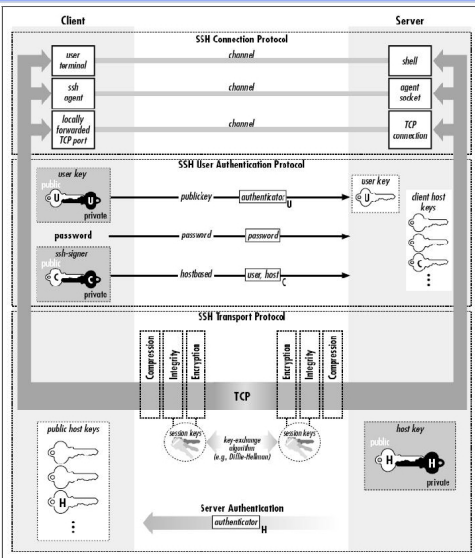


Figure 3-4 SSH-2 architecture



# The structure of the SSH-2 Protocol

## Very clean 3-layer internal architecture (RFC 4251)

- Transport Layer (RFC 4253)
  - initial key exchange, server authentication, data confidentiality, data integrity, compression, key re-exchange ( algorithm negotiation, session-ID, privacy)
- User Authentication Layer (RFC 4252)
  - Client Authentication: provides various authentication methods (public key, host bases, password, etc.)
- Connection Layer (RFC 4254)
  - defines the logical channels and the requests to handle the services like: secure interactive shell session, X11 forwarding, TCP/IP forwarding (channel multiplexing, pseudo terminals, flow control, remote program execution, authentication agent forwarding, terminal handling, etc.)

# The Components of the SSH suite

SSH binary programs, scripts

```
uhu:~> dpkg -L openssh-client | grep bin
/usr/bin
/usr/bin/ssh
/usr/bin/scp
/usr/bin/ssh-add
/usr/bin/ssh-agent
/usr/bin/ssh-keygen
/usr/bin/ssh-keyscan
/usr/bin/sftp
/usr/bin/ssh-vulnkey
/usr/bin/ssh-copy-id
/usr/bin/ssh-argv0
/usr/bin/slogin
uhu:~>
```

# The Components of the SSH suite

SSH man page

```
uhu:~> ssh --help
usage: ssh [-1246AaCfGkKkMNnqsTtVvXxY] [-b bind_address]
          [-c cipher_spec]
          [-D [bind_address:]port] [-e escape_char] [-F configfile]
          [-i identity_file] [-L [bind_address:]port:host:hostport]
          [-l login_name] [-m mac_spec] [-O ctl_cmd] [-o option]
          [-p port]
          [-R [bind_address:]port:host:hostport] [-S ctl_path]
          [-w tunnel:tunnel] [user@]hostname [command]

uhu:~>
```

# The SSH suite

## SSH parameters

### Parameter of SSH

- If `command` is specified, it is executed on the remote host instead of a login shell.
- `-F configfile`
  - default configuration file: `~/.ssh/config`
- `-i identity_file` (private key)
  - default for `ssh2`: `~/.ssh/id_rsa` `~/.ssh/id_dsa`
- `-p port` (to connect to on the remote host)
- `-v` Verbose mode
  - to debug problems and see the progress of connection
- `-l username` (`ssh -l sysadmin atlantis`)
- `username@hostname` (`ssh sysadmin@atlantis`)
- `-X` (X11 forwarding: `ssh -X sysadmin@gorilla`)

# The SSH suite

## SSH examples

```
hades:sysadmin!8> ssh ke@bullfinch
ke@bullfinch's password:
Linux bullfinch 2.6.24-etchnhalf.1-686 #1 SMP Thu Nov 5 02:25:56 UTC 20
..... deleted .....
No mail.
Last login: Sat Nov 21 17:45:11 2009 from hades.risc.uni-linz.ac.at
Sat Nov 21 17:45:12 CET 2009
bullfinch>
```

```
hades:sysadmin!12> ssh gonzales who
cschneid pts/2      Nov 18 12:11 (ozelot.risc.uni-linz.ac.at)
cschneid pts/3      Nov 19 15:33 (ozelot.risc.uni-linz.ac.at)
cschneid pts/4      Nov 18 13:52 (ozelot.risc.uni-linz.ac.at)
cdoench pts/5      Nov 20 09:50 (dog.risc.uni-linz.ac.at)
mkauers pts/6      Nov 21 12:01 (fennek.risc.uni-linz.ac.at)
hades:sysadmin!13>
```

# The SSH suite

ssh with command

## X11 forwarding wird activated

```
hades:sysadmin!13> ssh -X gonzales
Linux gonzales 2.6.26-2-amd64 #1 SMP Thu Nov 5 02:23:12 UTC 2009 x86_64
Last login: Fri Nov 20 15:24:10 2009 from tc14.risc.uni-linz.ac.at
gonzales:sysadmin!1>
gonzales:sysadmin!1> mathematica &
[1] 18455
gonzales:sysadmin!2> kill -TERM 18455
gonzales:sysadmin!3>
```

# Agenda

- 1 Remote Login
- 2 File Services
- 3 Secure Shell
- 4 SSH tunneling**
- 5 SSH no password
- 6 VNC
- 7 RDP

# SSH tunneling

## What is an SSH tunnel

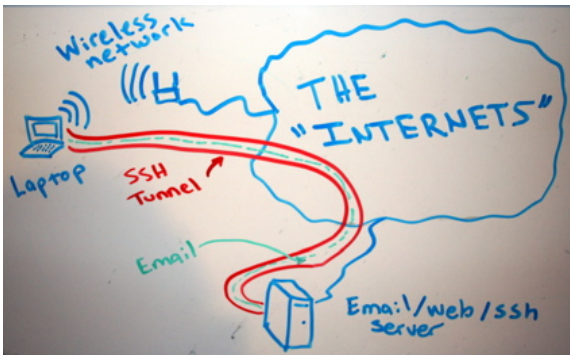
- tunnel is a networking term, means a connection, usually encrypted
- connects two computers together across another usually untrusted network

## Why do we need it - the Internet is very insecure !

- your laptop/home computer connects to another computer without encryption
- some protocols do have encryption built in, some do not
- your email client, your ftp program, VNC client, etc.
- **Never use clear text connections !**
- **definitively not for login/password data!**
- **configure SSH tunnel for your connections!**



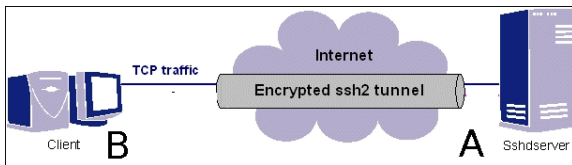
# Secure WLAN connection through the Internet



# SSH tunnel through the Internet

## SSH Tunnel Topology

- Client B (laptop, PC at home, etc) connects using local ports
- Server A running the sshd server program
  - mail server: port 25 smtp; VNC server: port 5901
- through an SSH tunnel - encrypted connection !



# How to make SSH tunnel in Linux

## basic version:

- **ssh -L localport:hostname:hostport hostname**
  - Specifies that the given port (localport) on the local, the client host is to be forwarded to the given host (hostname) and port (hostport) on the remote side (hostname).
  - `ssh -L 22000:bullfinch.risc.uni-linz.ac.at:143 bullfinch.risc.uni-linz.ac.at`
- **ssh -L localport:hostname:hostport remotehost**
  - Specifies that the given port (localport) on the local, the client host is to be forwarded to the given host (hostname) and port (hostport) on the remote side (remotehost).
  - `ssh -L 20000:kernel.risc.uni-linz.ac.at:143 bullfinch.risc.uni-linz.ac.at`

# How to make SSH tunnel in Linux

## full version

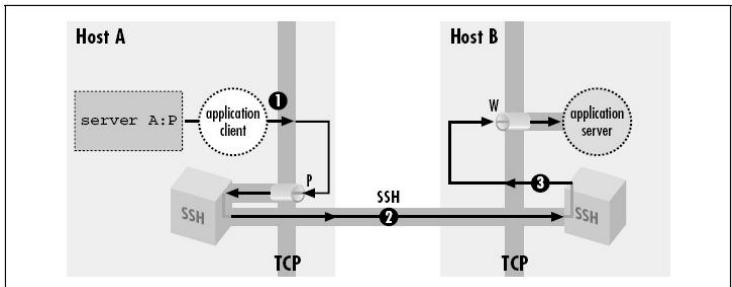
- `ssh -f -N -L localport:host:hostport sshd-server-computer`
  - B: local computer, C: host, A: sshd-server-computer
- -N is for portforwardin (do not execute command)
- -f go into background
- you can use more -L option in one command, (create more tunnels!)



# SSH Tunnel - Port forwarding

Window SSH client from [www.ssh.com](http://www.ssh.com)

## Port forwarding



# SSH Tunnel - Port forwarding

examples for more tunnels

## Tunnels for gorilla (VNC) and crutch (RDP)

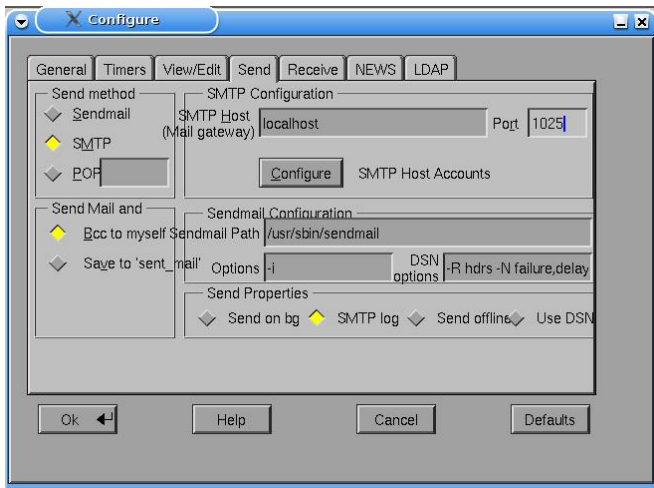
- shell aliases: gorilla and crutch

```
uhu:~> which gorilla
gorilla:  aliased to
          ssh -f -N
          -L 5901:localhost:5901
          gorilla.risc.uni-linz.ac.at
uhu:~>
```

```
uhu:~> which crutch
crutch:  aliased to
         ssh -f -N
         -L 3389:crutch.risc.uni-linz.ac.at:3389
         homer.risc.uni-linz.ac.at
uhu:~>
```

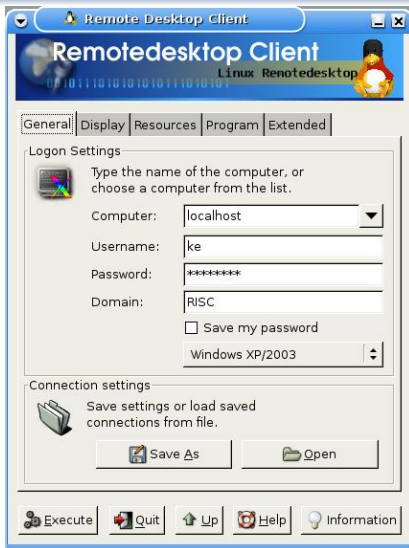
# SSH Tunnel - Port forwarding

examples: sending email with stmp by tunneling from laptop to homer



# SSH Tunnel - Port forwarding

examples: rdp tunneling from laptop to crutch though homer





# SSH Tunnel - Port forwarding

examples for more tunnels

## Tunnels

- shell alias: bt (bullfinch tunnel)

```
uhu:~> which bt
```

```
bt:      aliased to
```

```
ssh -f -N
```

```
-L 20000:grizzly.risc.uni-linz.ac.at:143
```

```
-L 22000:bullfinch.risc.uni-linz.ac.at:143
```

```
-L 2222:bullfinch.risc.uni-linz.ac.at:995
```

```
-L 1025:homer.risc.uni-linz.ac.at:25
```

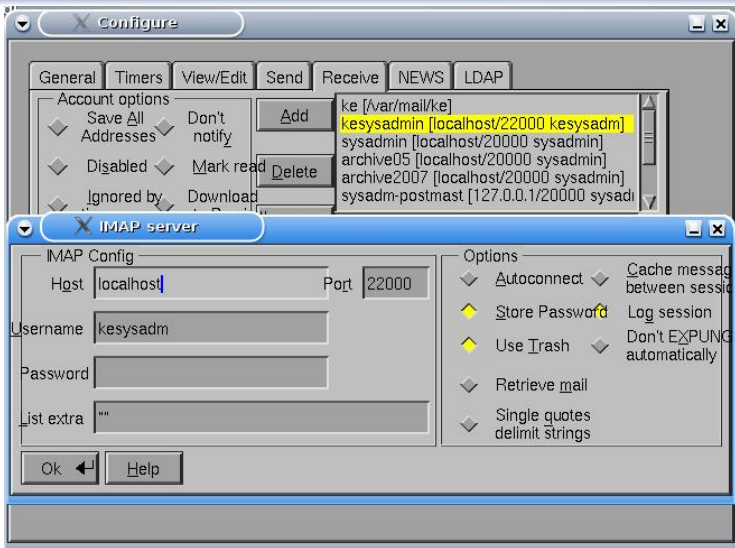
```
-L 4442:localhost:442
```

```
bullfinch.risc.uni-linz.ac.at
```

- sysadmin:imap, kerdei:imap, kerdei:pop3s kerdei:smtp,  
sysadmin:apache2-ssl

# SSH Tunnel - Port forwarding

examples: more IMAP connections through the same tunnel



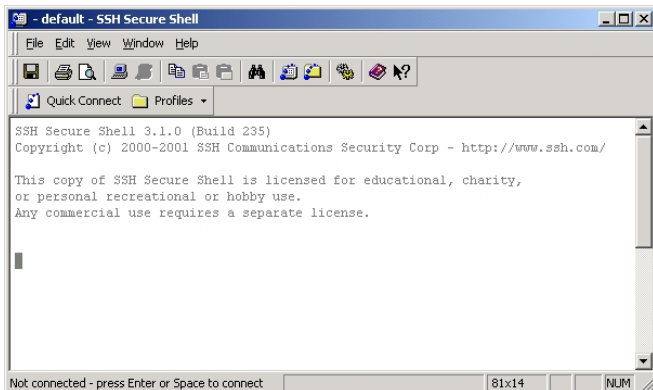
# SSH Tunnel - MS Windows

SSH Shell from ssh.com

Windows SSH-Client (ssh.com) not anymore public at TU-Wien:

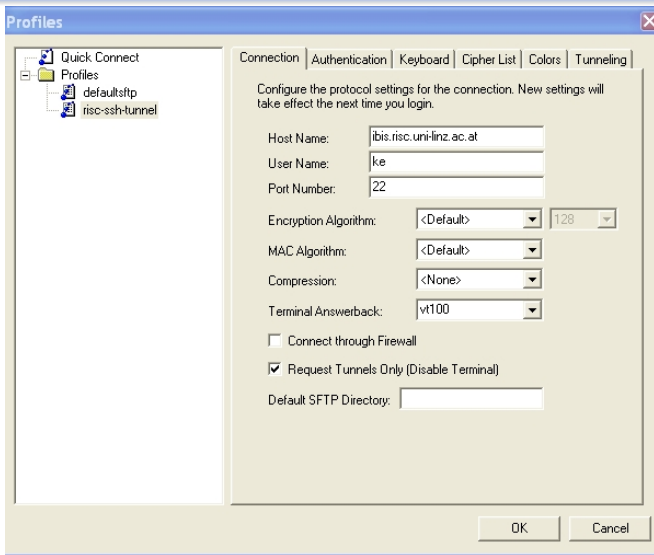


<https://www.risc.jku.at/internals/userinformation/completeguide/userguide/3.2.9.exe>



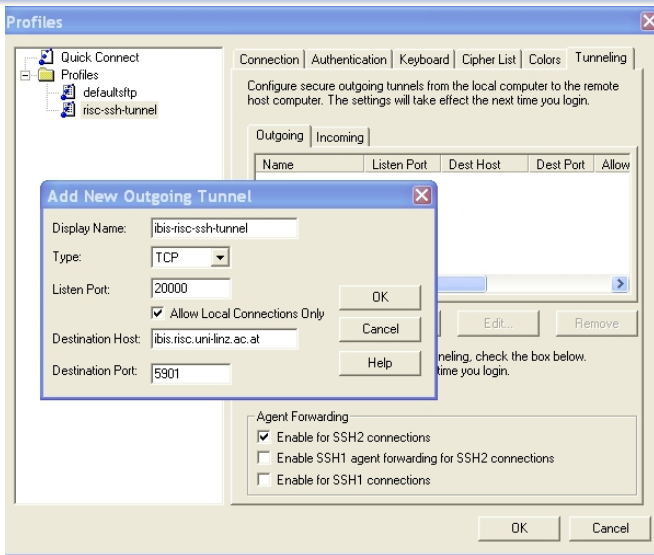
# SSH Tunnel - MS Windows

## Connection configuration



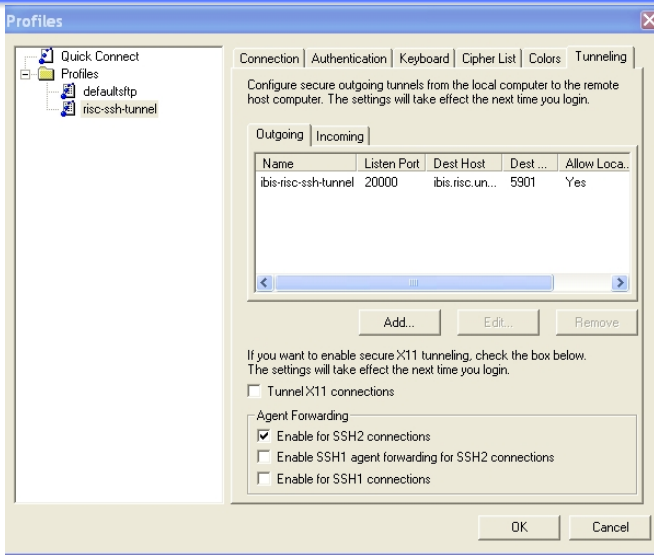
# SSH Tunnel - MS Windows

## Configuring ports



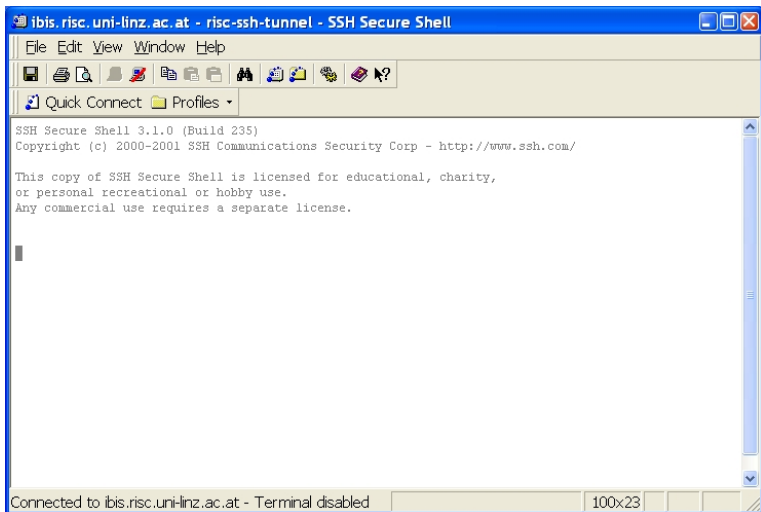
# SSH Tunnel - MS Windows

Established tunnel



# SSH Tunnel - MS Windows

Established tunnel



# Agenda

- 1 Remote Login
- 2 File Services
- 3 Secure Shell
- 4 SSH tunneling
- 5 SSH no password**
- 6 VNC
- 7 RDP



# Remote login without passwd by SSH

How to set up

## Basics of the authentication

- SSH authentication methods
  - password authentication; private key authentication
- private key authentication
  - Create a private key - public key pair with **ssh**; set the passphrase for the private key !
  - Copy the public key to the remote computer
  - Configure the authentication agent: **ssh-agent**
  - use **ssh-add** command to add your identity to the ssh-agent
- Customizing the authentication
  - installing **ssh-askpass**
  - Starting ssh-add by an icon

# Remote login with SSH

create a public key

## Create public key

- Create a public key: `ssh-keygen -t dsa`
  - **always USE a passphrase**
  - without passphrase: if your private key is stolen your identity is stolen
  - choose it different from your password, choose a long one
  - it must as save as your password, it can be more save (less restriction)

```
bienenfresser:~> ssh-keygen -t dsa
Generating public/private dsa key pair.
Enter file in which to save the key (/home/ke/.ssh/id_dsa):
Enter passphrase (empty for no passphrase):
Enter same passphrase again:
Your identification has been saved in /home/ke/.ssh/id_dsa.
Your public key has been saved in /home/ke/.ssh/id_dsa.pub.
The key fingerprint is:
a8:00:0e:39:b9:5e:30:a0:c7:70:cd ke@bienenfresser
bienenfresser:~>
```

# Remote login with SSH

copy public key

## Copy public key

- copy the public key to the RISC computer
- add to `.ssh/authorized_keys` file

```
bienenfresser:~> cat .ssh/id_dsa.pub |  
ssh goose.risc.uni-linz.ac.at 'cat - >>.ssh/authorized_keys'
```

```
ke@goose.risc.uni-linz.ac.at's password:  
bienenfresser:~>
```

- you will be asked for your password on the remote computer
- check that it works:
  - `ssh -X goose.risc.uni-linz.ac.at`
  - passphrase will be asked for

# Remote login with SSH

ssh-add ssh-agent

## ssh-agent

- Authentication agent, **ssh-agent**
  - saves the identity value (private key) in the memory
  - supports authentication requests from SSH
  - started by login in KDE, GNOME

## ssh-add

- transfers the identification (.ssh/id\_dsa) to ssh-agent
- asks for the passphrase, to decrypt the private key

```
bienenfresser:~> ssh-add .ssh/id_dsa
Enter passphrase for .ssh/id_dsa:
Identity added: .ssh/id_dsa (.ssh/id_dsa)
bienenfresser:~>
```

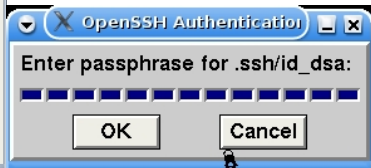
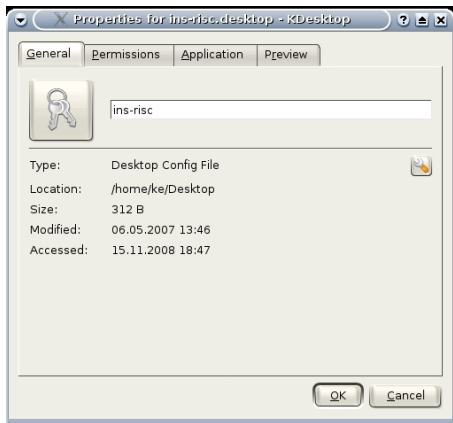
- will invoke ssh-askpass, if get a zero in standard input

# Customizing ssh-add icon for ssh-add

Create a small script in i.e. `/usr/local/bin/` or `~/bin`

```
#!/bin/csh
```

```
cat /dev/null | ssh-add .ssh/id_dsa
```

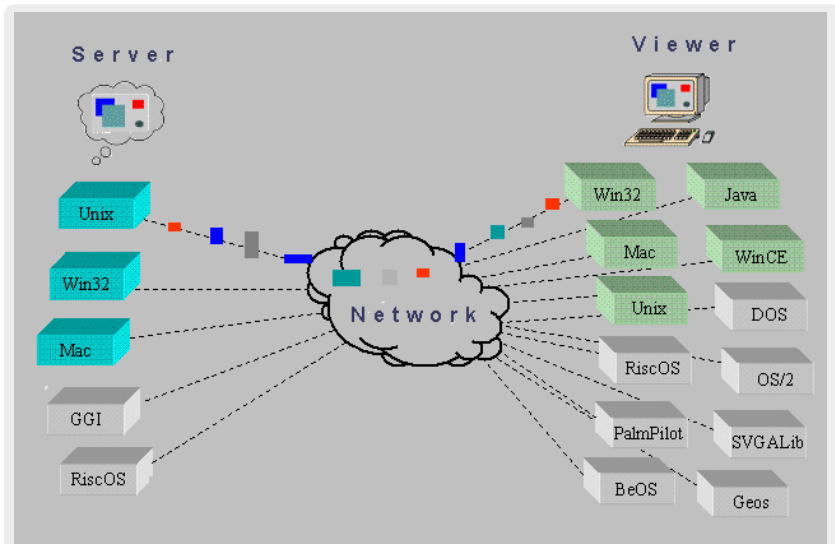


# Agenda

- 1 Remote Login
- 2 File Services
- 3 Secure Shell
- 4 SSH tunneling
- 5 SSH no password
- 6 VNC
- 7 RDP

# VNC (Virtual Network Computing)

referred as Virtual Network Console, too



# VNC - Virtual Network Computing

## Basic Features

### VNC is a free platform-independent application

- is a Client-Server architecture based on the RFB protocol
- is a graphical desktop sharing system
  - without the need of X on the client side
- transmits the keyboard and mouse events from one computer to another
- relays the graphical screen updates back in the other direction
- is not a secure protocol
  - passwords are not sent in plain-text
  - crack could be successful if both the encryption key and encoded password are sniffed from a network
- always use VNC through an **SSH tunnel** !
- Open source tool: <http://www.realvnc.com>



# VNC - Virtual Network Computing

## Basic terminology

### Framebuffer (FB)

- is a video output device that drives a video display from a memory buffer containing a complete frame of data
- the information in the buffer consists of color values for every pixel on the screen
- total memory required for the FB depends on the resolution, and on the color depth
- a FB device driver was created for X11: XF86 FBDev as standard part of XFree86
- FBDev is basic driver in X, without using the features of the GPU

# VNC - Virtual Network Computing

## RFB Protocol

### Remote Framebuffer (RFB) protocol

- is a simple protocol for remote access to graphical user interfaces
- it works at the framebuffer level, it is applicable to all windowing systems and applications, including X11, Windows and Macintosh.
- to the basic features a lot of extensions added
  - file transfers
  - more sophisticated compression
  - security techniques
- seamless cross-compatibility
  - between the many different VNC client and server implementations
- clients and servers negotiate using
  - the best RFB version
  - most appropriate compression and security options

### RealVNC, Ltd.

- continues development of VNC and to maintain the RFB protocol

# VNC - Virtual Network Computing

## VNC Server

### VNC Server features

- does not have a physical display! (does not bind to a display)
- consists of **two** servers on Linux/Unix OS
  - Framebuffer Server: to communicate **remotely** with the VNC client
  - X Server: to communicate **locally** with the X-clients, presenting itself as a real X-Server
  - the X-server part fills up the framebuffer with the output from the X-clients
  - the FB-server part transfers the content of the FB to VNC-client(s)
- the session information will be kept in the server side
  - if you disconnect from the VNC server it will **not** close the session
  - Disconnecting from VNC server behaves like locking the session and switching off the monitor
- you have explicitly kill the VNC server after your work !

# VNC - Virtual Network Computing

## VNC Server II

### VNC Server features

- by default uses TCP ports 5900 through 5906
  - each port corresponds to a separate screen (:0 to :6)
- uses ports 5800 through 5806 for java connections
  - allowing clients to interact through a Java-enabled web browser
- Xvnc is the Unix VNC server, it is based on standard X server
- any number of Xvnc server can be started (resources!)
- more clients can connect to the same server
- VNC need more/high bandwidth because of transferring screenshots
  - the session and switching off the monitor

# VNC - Virtual Network Computing

## Starting the VNC Server

### Starting the VNC server

- log in by `ssh` to a RISC computer, e.g. `gepard`:
  - `ssh -l username gepard.risc.uni-linz.ac.at`
  - `uhu> ssh -l guestuser gepard.risc.uni-linz.ac.at`
- start the VNC server by the command:
  - `gepard:1> vncserver -geometry 1024x768 -depth 24`
- You will see something similar in the screen (it just ask a session password at the first run):

You will require a password to access your desktops.

Password:

Verify:

New 'X' desktop is gepard:1

Starting applications specified in /etc/X11/Xsession

Log file is /home/yourusername/.vnc/gepard:1.log

# VNC - Virtual Network Computing

## Starting the VNC server

### Starting Server

- You have to memorize the server name and the screen number - after the computer name (in this case it is ":1")
  - The port number will be 5901 (5900+screen number)
- You have to **shutdown** the VNC server, after you do not need it:
  - `gepard:3> vncserver -kill :1`  
Killing Xvnc4 process ID 2693  
`gepard:4>`
- The configuration and log data for the VNC server are stored in the
  - `/home/<username>/.vnc/` directory
- The VNC server asks for the password at the first time only
- If you forgot the password for the VNC server, remove or change it:
  - `rm /home/<username>/.vnc/passwd`
  - `vncpasswd /home/<username>/.vnc/passwd`

# VNC - Virtual Network Computing

## Starting the VNC client

### Starting the VNC Client

- create an ssh tunnel on your local computer to the vnc server:

```
ssh -f -l username -N -L 5901:localhost:5901 srvname
uhu> ssh -f -l guestuser -f -N -L 5901:localhost:5901 gepard.risc.u
```

- start the VNC client on your local computer

```
uhu> xvncviewer localhost:1
```

- best solution is to use a shell alias, e.g. for the tcsh in /home/username/.cshrc :

- `gepardtunnel alias "ssh -f -l username -N -L 5901:localhost:5901 gepard.risc.uni-linz.ac.at "`
- **source** /home/username/.cshrc
- activate the tunnel in the command line by **gepardtunnel**

- Security Risk

- your password can be stolen using xvncclient without ssh tunnel !
- hacker get full access to your home directory

# VNC - Virtual Network Computing

## VNC server and client starting

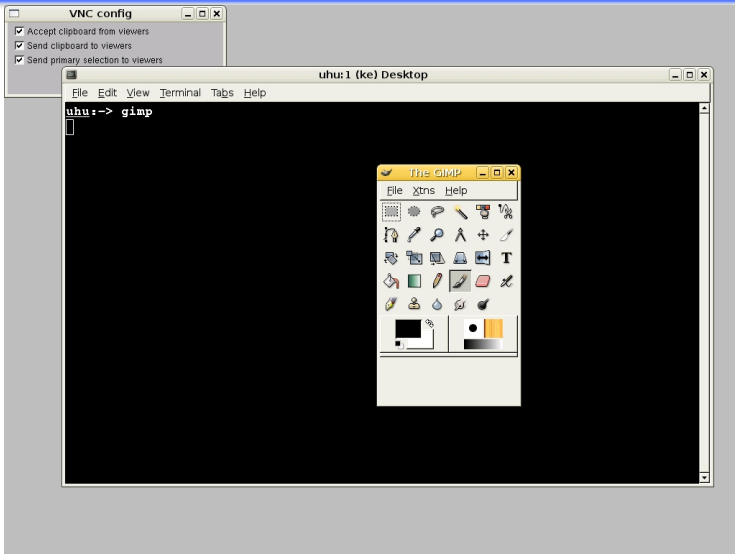
### Configuration of the vncserver at RISC

- configuration of the vncservers at RISC with option **-localhost**
  - this means, that the vncserver accepts connections only from localhost (127.0.0.1)
  - with other words: you **MUST** use ssh tunnel to the host where the vncserver is running (otherwise you'll get error: **connection refused**).
- example: assumed, you started the vncserver on the computer speedy.risc.uni-linz.ac.at, you need the following ssh-tunnel:
  - **ssh -f -l username -N -L 5901:localhost:5901 speedy.risc.uni-linz.ac.at**
  - localhost will be replaced by 127.0.0.1, and this is the IP from which the vncserver accepts connections.



# VNC - Virtual Network Computing

VNC Client - xnvviewer - standard xterm



# VNC - Virtual Network Computing

VNC Server - default xstartup file

## xstartup file - simple window manager

```
#!/bin/sh
```

```
# Uncomment the following two lines for normal desktop:
```

```
# unset SESSION_MANAGER
```

```
# exec /etc/X11/xinit/xinitrc
```

```
[ -x /etc/vnc/xstartup ] && exec /etc/vnc/xstartup
```

```
[ -r $HOME/.Xresources ] && xrdb $HOME/.Xresources
```

```
xsetroot -solid grey
```

```
vnccfg -iconic &
```

```
x-terminal-emulator -geometry 80x24+10+10 -ls -title "$VNCDESKTOP Deskt
```

```
x-window-manager &
```

- x-terminal-emulator is a link to /usr/bin/x-terminal-emulator
  - which is a link to /usr/bin/gnome-terminal.wrapper
- x-window-manager
  - is the /usr/bin/metacity, a very simple WM



# VNC - Virtual Network Computing

## Xvncserver configuration

### How to start KDE session

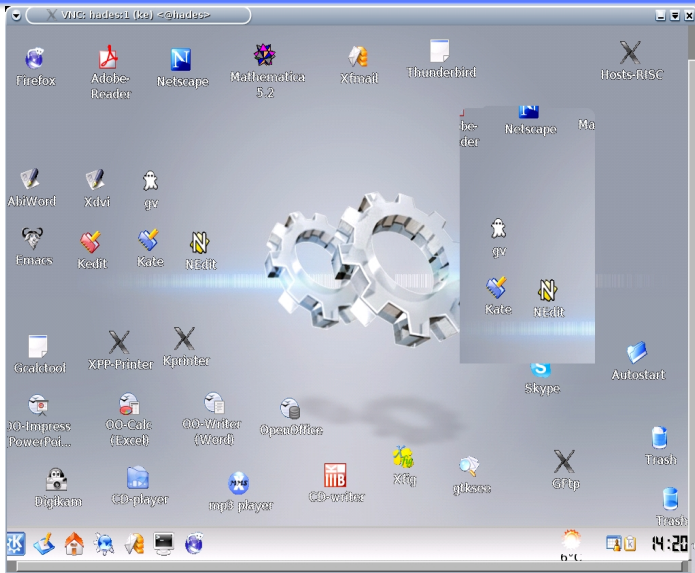
- configuration directory: `~/.vnc`
  - password: `passwd`; session startup: `xstartup`

```
#!/bin/sh
# Uncomment the following two lines for normal desktop:
# unset SESSION_MANAGER
# exec /etc/X11/xinit/xinitrc
[ -x /etc/vnc/xstartup ] && exec /etc/vnc/xstartup
[ -r $HOME/.Xresources ] && xrdb $HOME/.Xresources

# xsetroot -solid grey
# vncconfig -iconic &
# x-terminal-emulator -geometry 80x24+10+10 -ls -title "$VNCDESKTOP_SESSION" &
## metacity window manager will be started:
# x-window-manager &
## to start a kde session uncomment the line below and add startx
# x-session-manager &
startkde &
```

# VNC - Virtual Network Computing

## VNC Client - xnvviewer - with KDE



# VNC - Virtual Network Computing

VNC Server - xstartup file

## simplest form of xstartup to start the metacity WM

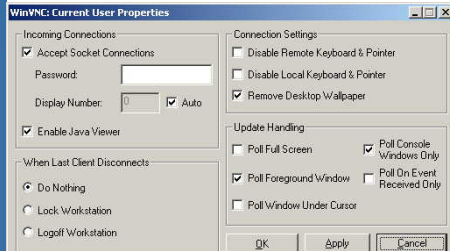
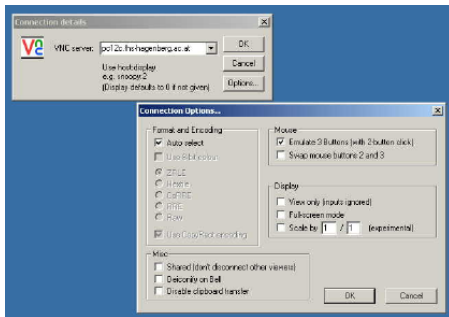
```
#!/bin/sh
xsetroot -solid grey
vncconfig -iconic &
x-window-manager &
xterm &
```

## simplest form of xstartup to start KDE

```
#!/bin/sh
exec startkde &
```

# Real VNC

## Using VNC under MS Windows



## Demonstration VNC client

Now make a short demonstration

how VNC works through a tunnel

# Agenda

- 1 Remote Login
- 2 File Services
- 3 Secure Shell
- 4 SSH tunneling
- 5 SSH no password
- 6 VNC
- 7 RDP



# Remote Desktop Protocol

Microsoft Windows

## Windows NT/2000: Terminal Services extension

- Remote Desktop Protocol (RDP) developed in the mid 1990's by Microsoft
  - RDP client computer (Windows/Unix) opens a remote desktop session on a Windows NT/2000 server with terminal services extension
  - In client window, user sees another desktop running on the server
  - Introduced by Windows NT Terminal Server Edition
  - Installed at RISC in 1999 for MS Office Compatibility goals
  - The first MS Windows Multiuser OS !
- Windows XP:
  - Provides builtin RDP service functionality
- Windows 2003 Server: successor of NT/2000 Terminal Server Edition

# Remote Desktop Protocol

crutch - the RISC Windows 2003 server

## crutch: Linux - Windows integration

- Supporting the RISC users for some MS Windows applications
  - for software available only on MS Windows
- Microsoft Software
  - OpenOffice and MS-Office are not fully compatible
  - MS Office is available in the (near) last version on crutch
- Adobe Software
  - Adobe Acrobat 9 Pro Extended (2 concurrent licenses)
  - Adobe Photoshop Lightroom 2.1 (1 concurrent license)
- Other Software
  - ACDSee 8 (image management and manipulation sw)
  - Canon DPP (Digital Photo Professional, for Canon DSLR RAW images)
- Configuration of crutch
  - the riscwide home directory is available (scratch,too)

# Remote Desktop Protocol

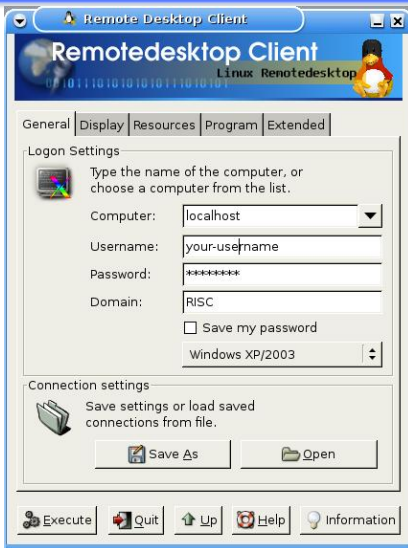
crutch - the RISC Windows 2003 server

## RDP ports, connections

- How to connect through an SSH tunnel to crutch
  - RDP uses the port 3389
  - the Windows-2003 server has no SSH server implementation
  - you have to connect to a Linux computer at RISC with SSH and make the tunnel through this computer to crutch
- `ssh -l username -f -N -L 3389:crutch.risc.uni-linz.ac.at:3389 gepard.risc.uni-linz.ac.at`
  - this is an SSH connection from your computer to gepard
  - the tunnel runs from your computer through gepard to crutch
  - the tunnel section between gepard and crutch is not secure
- Configuration of **grdesktop**
  - define **localhost** in the General options for the field Computer

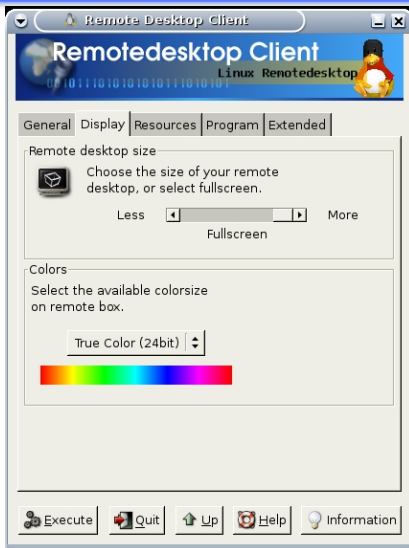
# GRDesktop - Configuration

## Gnu RDP Client



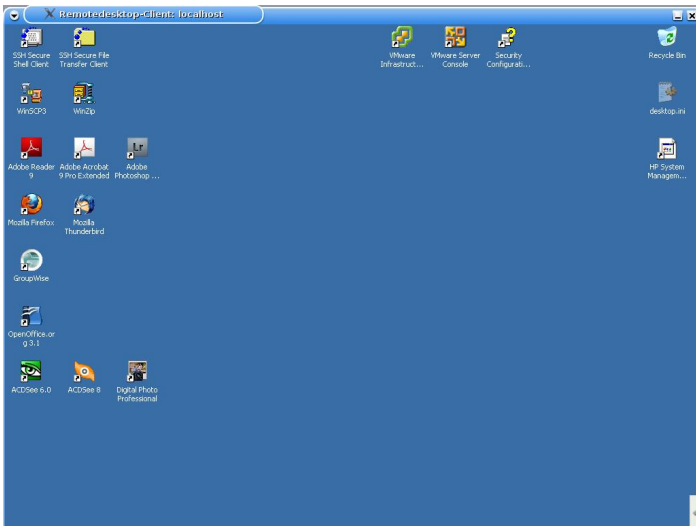
# GRDesktop - Configuration

## Gnu RDP Client



# GRDesktop

## Main screen



## End of Remote Services, Desktops

Thanks for your attention !